

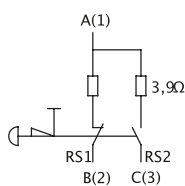
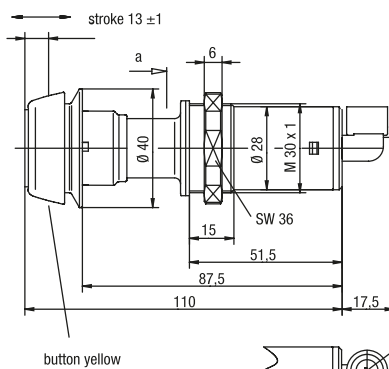


The power take off push button switch 145PTO with E-stop function is used primarily in agricultural machinery for safely switching the front or rear PTO shaft on and off.

- Contactless switching principle through reed technology
- Operating temperature -40°C to +85°C acc. to DIN IEC 68
- Simple installation
- Developed for harsh operating conditions with internal electronics sealed to IP67 protection class

IMAGE 1/1

**145PT010B00 power take-off switch with AMP Superseal connector**



## Product options

IMAGE 1/1

### ORDERING KEY

|             |                                       |                                 |
|-------------|---------------------------------------|---------------------------------|
| 145PT010A00 | Power take-off switch 48V/0.3A/10W/VA | 1m cable                        |
| 145PT010B00 | Power take-off switch 48V/0.3A/10W/VA | AMP Superseal connector, angled |



SW36 nut included with delivery

## Article characteristics

| Attribute                    | 145PT010A00       | 145PT010B00                     |
|------------------------------|-------------------|---------------------------------|
| Max. switching voltage       | 36 V DC           |                                 |
| Max. switching current       | 0.5 A             |                                 |
| Max. switching power         | 10 W              |                                 |
| Max. switching power         | 10 VA             |                                 |
| Contact form                 | NO                |                                 |
| Series resistor              | 3.9 Ohm           |                                 |
| Protection class, electronic | IP67 DIN EN 60529 |                                 |
| Operating temperature min.   | -40 °C            |                                 |
| Max. operating temperature   | 85 °C             |                                 |
| Min. storage temperature     | -40 °C            |                                 |
| Max. storage temperature     | 85 °C             |                                 |
| Installation                 | from above        |                                 |
| Mounting type                | screwed           |                                 |
| Thread                       | M30               |                                 |
| Connector type               | -                 | AMP Superseal 1.5 282105-1 3Pin |
| Cable type                   | BOY11Y PUR        | -                               |
| Cable length                 | 1 m               | -                               |