



Power Take-Off Switch 145PTO

With cable.

The power take off push button switch 145PTO with E-stop function is used primarily in agricultural machinery for safely switching the front or rear PTO shaft on and off.

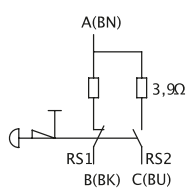
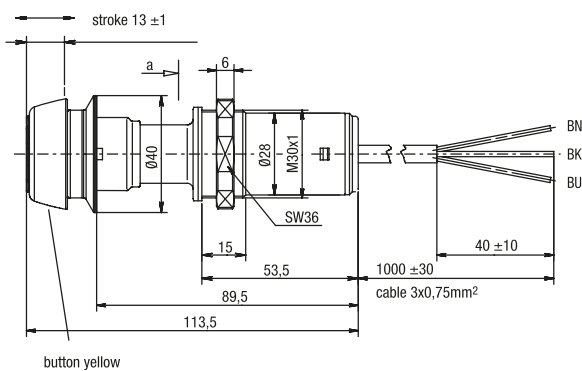
Technical specifications

- Contactless switching principle through reed technology
- Operating temperature -40°C to +85°C acc. to DIN IEC 68
- Simple installation
- Developed for harsh operating conditions with internal electronics sealed to IP67 protection class

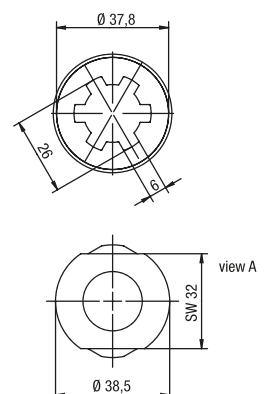
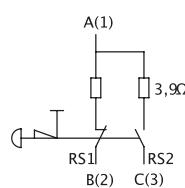
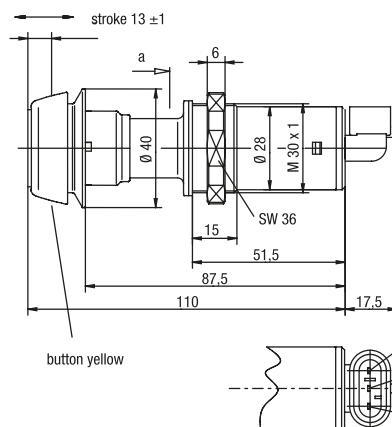
Technical drawing

IMAGE 1/1

145PTO10A00 power take-off switch



145PTO10B00 power take-off switch with AMP Superseal connector



Product options

IMAGE 1/1

ORDERING KEY

145PT010A00	Power take-off switch 48V/0.3A/10W/VA	1m cable
145PT010B00	Power take-off switch 48V/0.3A/10W/VA	AMP Superseal connector, angled



SW36 nut included with delivery

Article characteristics

Attribute	145PT010A00	145PT010B00	ED145PT010A00	ED145PT010B00
Max. switching voltage	36 V DC		-	
Max. switching current	0.5 A		-	
Max. switching power	10 W		-	
Max. switching power	10 VA		-	
Contact form	NO		-	
Series resistor	3.9 Ohm		-	
Protection class, electronic	IP67 DIN EN 60529		-	
Operating temperature min.	-40 °C		-	
Max. operating temperature	85 °C		-	
Min. storage temperature	-40 °C		-	
Max. storage temperature	85 °C		-	
Installation	from above		-	
Mounting type	screwed		-	
Thread	M30		-	
Connector type	-	AMP Superseal 1.5 282105-1 3Pin	-	
Cable type	BOY11Y PUR	-		
Cable length	1 m	-		