



## Robust Joystick J7 Base

Robust joystick J7 was developed primarily for installation in the armrests of mobile machinery. The design combines a high level of robustness, safety and reliability in a compact space. It is ideally suited for high load and high use applications.

### Technical specifications

- Developed for adverse environmental conditions, IP67 protection class (electronics)
- For forces up to 1000 N in x and y direction
- Space-saving design allows ergonomic arrangement in armrests
- High reliability thanks to shielded, contactless Hall technology
- Friction brake, overpressure points and no-detent actuation enables the operation of various functions

## Technical drawing

IMAGE 1/4

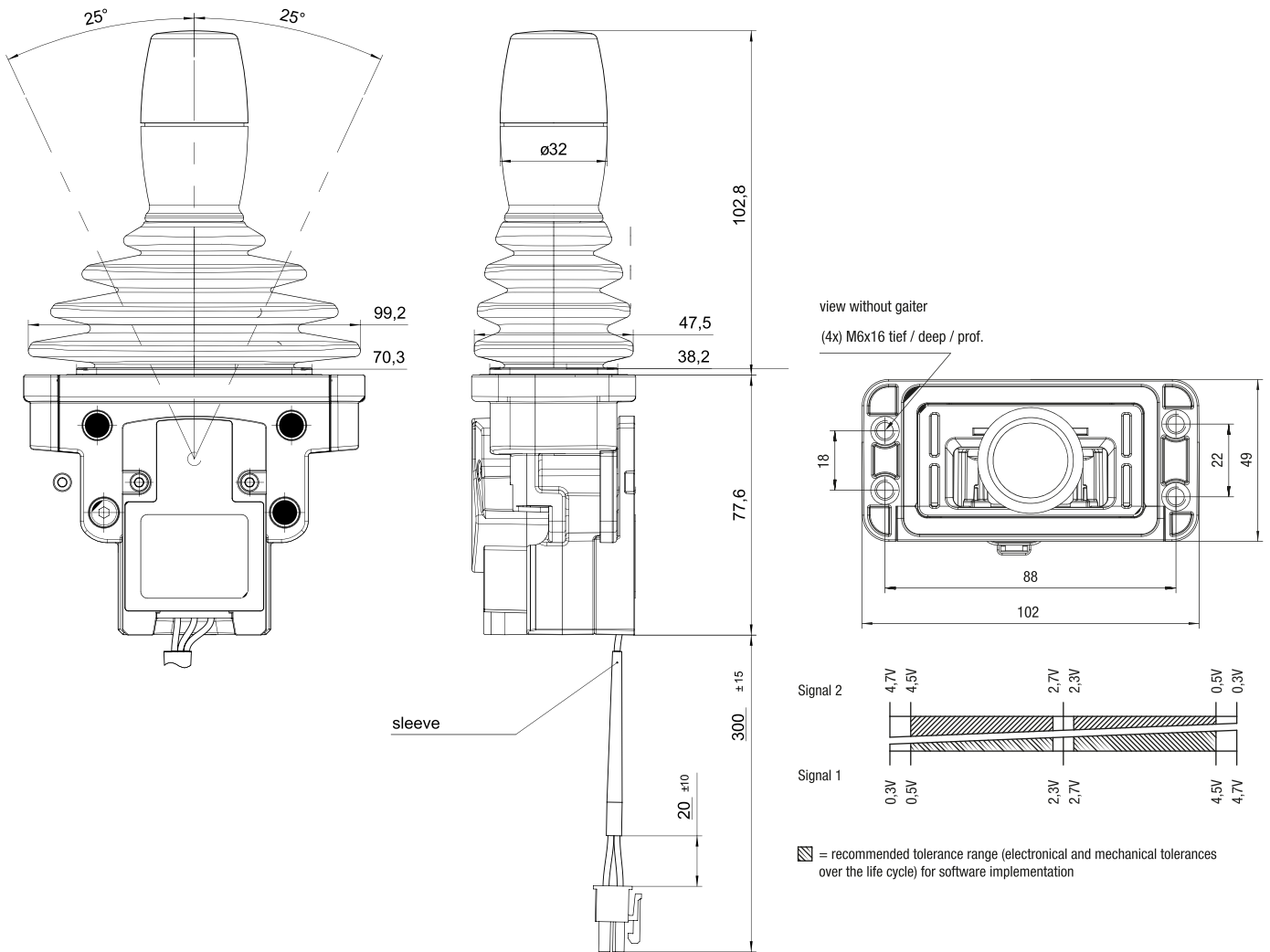


IMAGE 2/4

Fastening with countersunk screw according to DIN EN ISO 10642 (4x)

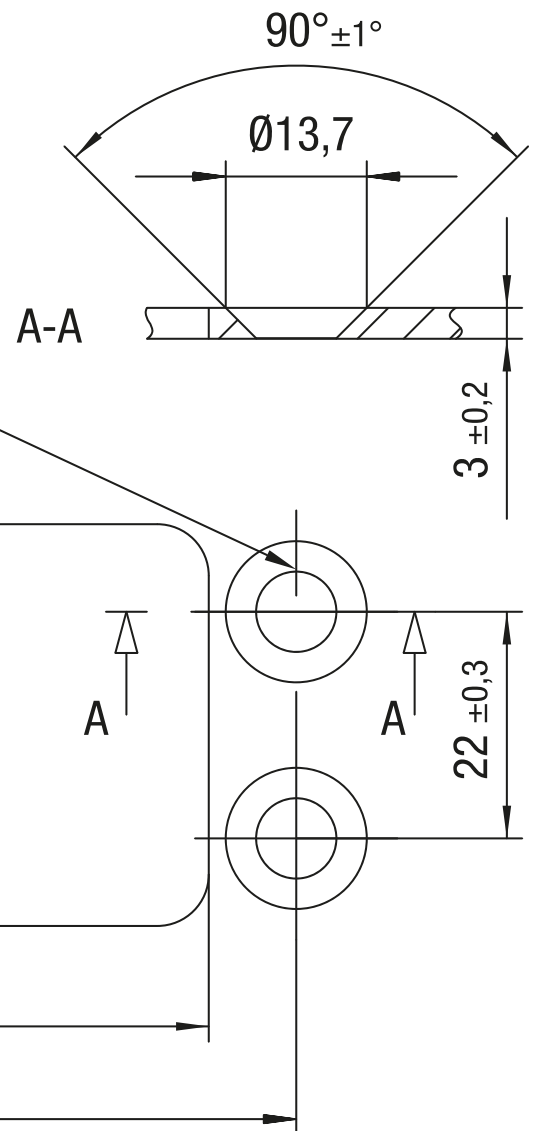
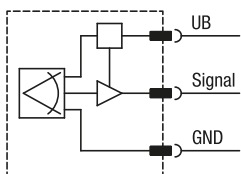


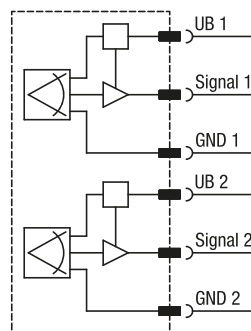
IMAGE 3/4

## Standard

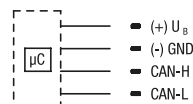
### Analogue



### Analogue redundant



### CAN



## Optional

### Analogue semi-redundant

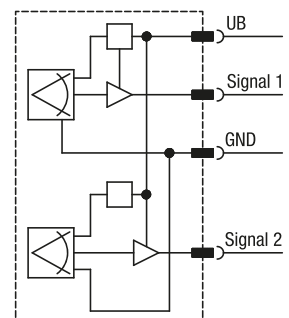
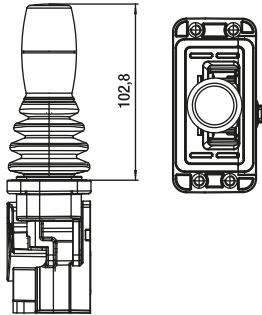
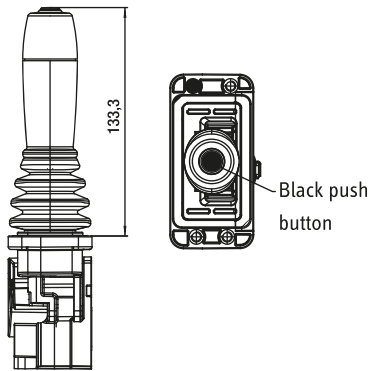


IMAGE 4/4

**Short handle**  
**Without micro push button switch**



**Long handle**  
**With micro push button switch**



**3 push buttons handle long**  
**with max. 3 micro push buttons**

