



Fingertip Joystick J3

CAN-capable, bottom mounted.

The single axis Hall-effect, Fingertip joystick J3, is ideal for use in control panels and armrests of industrial trucks and municipal vehicles, as well as in agricultural and construction machinery thanks to its compact and robust design.

Technical specifications

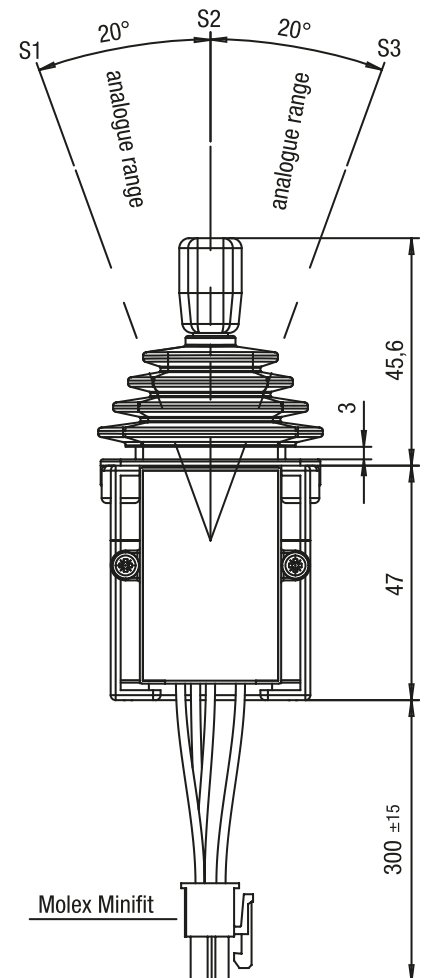
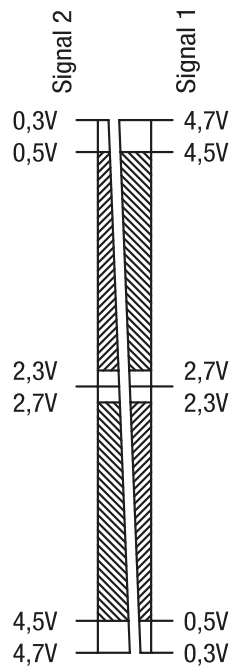
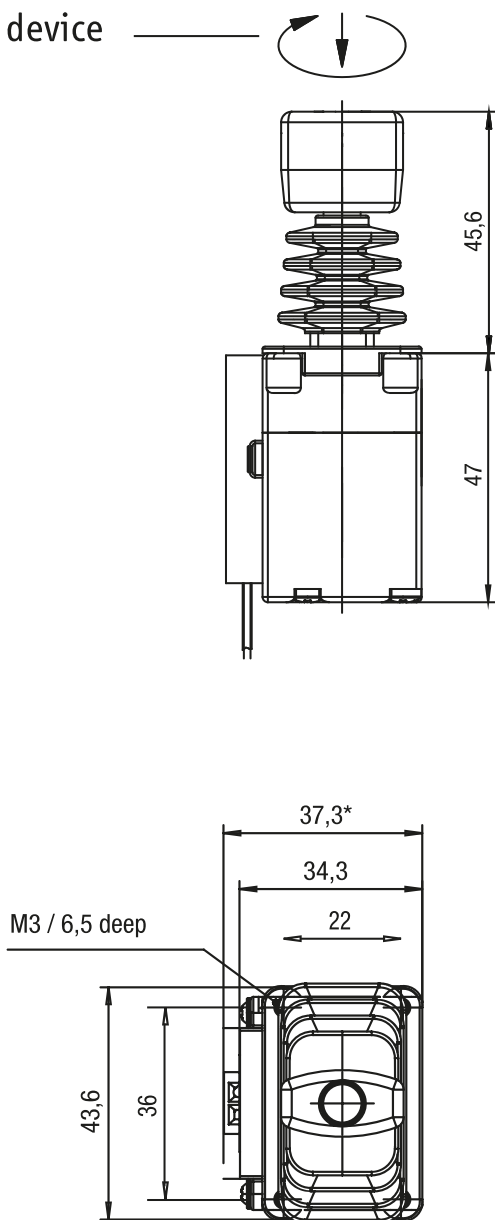
- Four actuation types: no-detent / detent, with friction brake or centre position interlock
- High reliability and long service life thanks to contactless Hall-effect and reed technology
- Analogue output signal (current/voltage, also redundant) or switching output
- CAN-bus connection (CANopen / SAE J1939)
- Various handle options, available with up to one push button switch
- IP67 protection class of electronics, ideal for harsh environmental conditions
- Deflection $\pm 20^\circ$ or $\pm 25^\circ$

Technical drawing

IMAGE 1/4

Optional
locking device

neutral position locked



* panel thickness for execution Switching output / redundant / CAN

 = recommended tolerance range

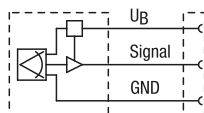
mounting hole standard handle



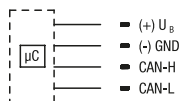
IMAGE 3/4

Standard

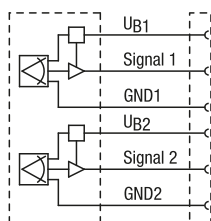
Analogue



CAN

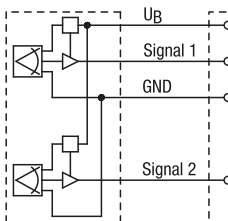


Redundant

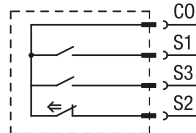


Optional

Semi-redundant



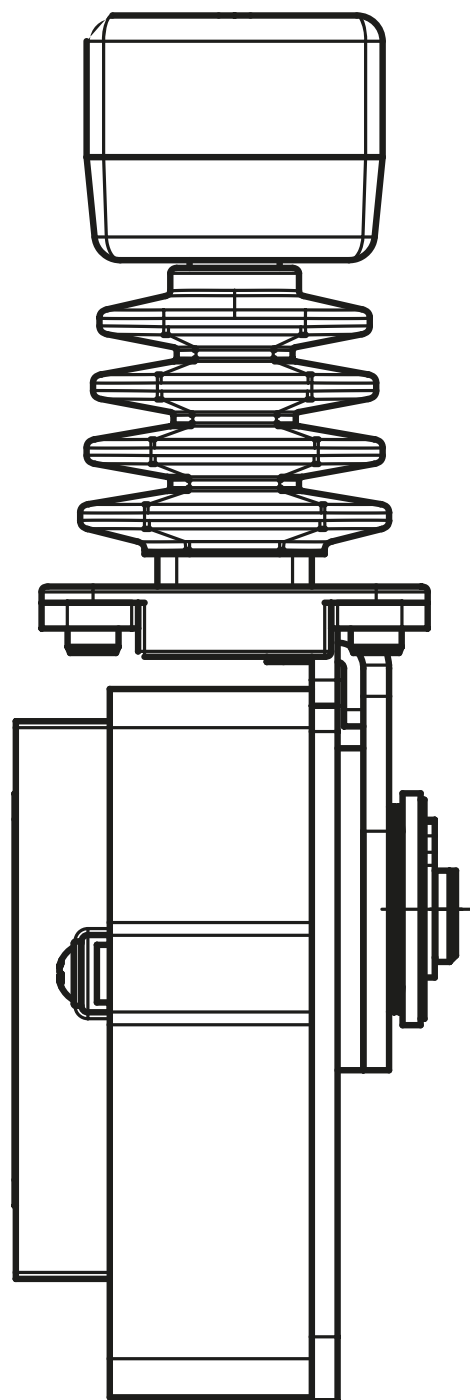
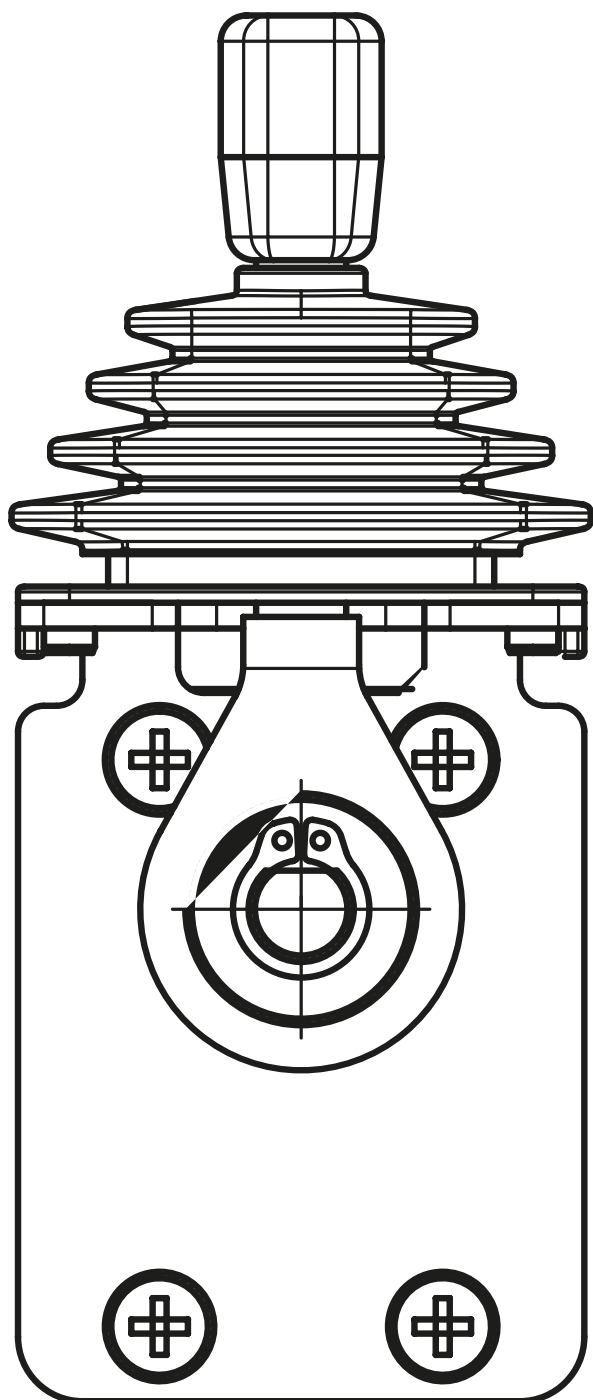
Switching output



← shown with handle in
centre position (S2 operated)

IMAGE 4/4

Optional with friction brake J3..AH. .



Product options

IMAGE 1/1

ORDERING KEY

J3							Single axis joystick
							Electronics
	A	1					Analogue 4-20 mA DC
	A	6					Analogue 0.5-4.5 V DC, ratiometric
	A	7					Analogue 0.5-4.5 V DC
	R	1					Redundant 4-20 mA DC
	R	6					Redundant 0.5-4.5 V DC, ratiometric
	R	7					Redundant 0.5-4.5 V DC
	C	0					CANopen
	C	J					CAN J1939
							Function
			A	A			No detent
			A	B			Detent
							Locking device
					0		Centre position cannot be locked mechanically
							Handle version
						A	Standard handle

Optional		
Electronics	Semi-redundant electronics module	
	Electronics module switching output	
	CAN (CANopen/J1939)	Baud rate
		Node ID (CANopen): tbd.
		Source Address (J1939): 0x70...0x79
Mechanics	Actuation type	No detent 25°
		No detent 25°
		Front detent only 20°/25°
		Friction brake, J3 handle on hand-throttle module
	Centre position mechanically lockable	
	Twist lock	
Handle	Handle J2 with up to 1 push button	Various push button configurations s. 145MT...