



Circular connector M12 4-pin

Product characteristics

- High protection class as well as high temperature range to meet the demands of adverse industrial environments
- Circular connector for customised assembly

Technical drawing

IMAGE 1/6

351150

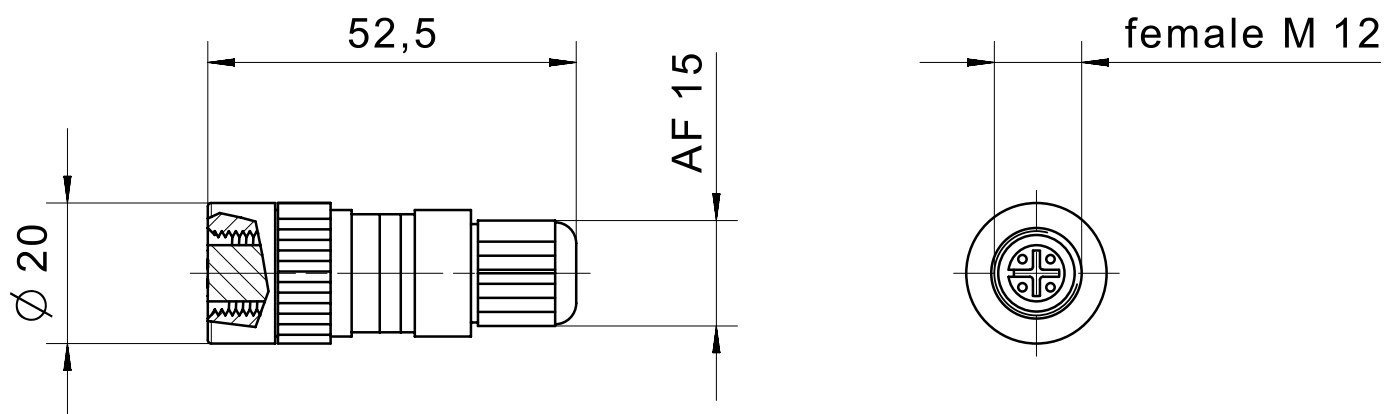


IMAGE 2/6

female M12

3

4



2

1

IMAGE 3/6



IMAGE 4/6

351151

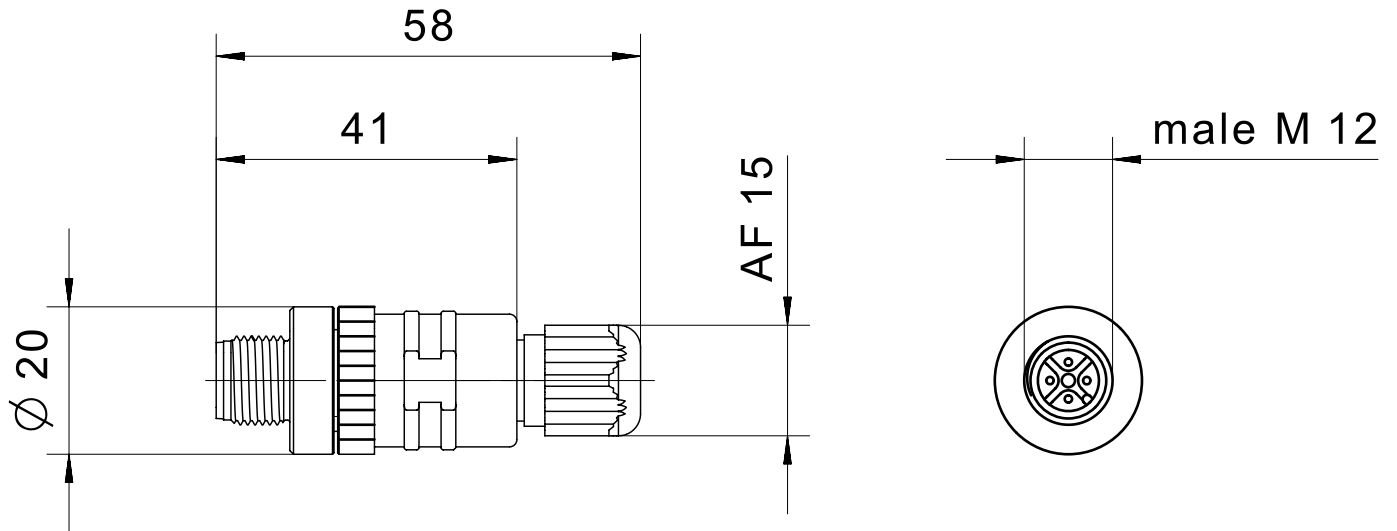
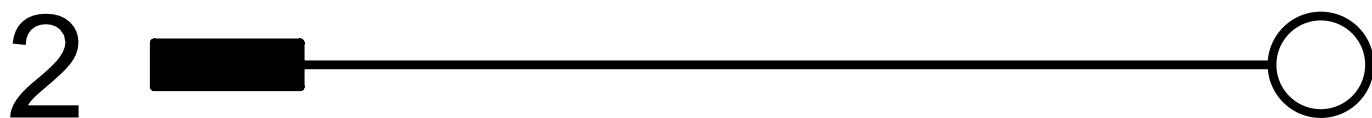


IMAGE 5/6



 Status	Maßstab		Benennung
	Revision	E	Kupplungsdose
	Gepr. Datum	29.03.19	Nummer
	Geprüft	pr1mi	Cat_351151

IMAGE 6/6



Product options

IMAGE 1/1

ORDERING KEY

351		Circular connector, 4-pin
	152	Coupling socket M8
	153	Coupling connector M8
	150	Coupling socket M12
	151	Coupling connector M12
		more coupling sockets / connectors on request

Article characteristics

Attribute	351150	351151	ED351150	ED351151
Pollution degree	3			-
Max. switching current per contact	4 A			-
Rated impulse withstand voltage (Uimp)	2500 V			-
Operating voltage max.	240 V DC			-
Operating voltage max.	240 V AC			-
Nut material	CuZi nickel-plated			-
Overmould material	PA			-
Operating temperature min.	-40 °C			-
Max. operating temperature	85 °C			-
Min. storage temperature	-40 °C			-
Max. storage temperature	85 °C			-
Torque for nuts	0,5 N m			-
Connector type	M12 socket, straight	M12 connector, straight		-
Cable diameter	3 - 6,5 mm			-
Number of pins	4			-
Connection type	Screw connection			-
Min. connection cross section	0.14 mm²			-
Max. connection cross section	0.75 mm²			-
Certified in accordance with	UL 2238/CSA22.2			-