



Float switch 205KS

The float switch side mount 205KS with Teflon hinge is ideal for use in media that has a tendency to clump or contains contaminants that need to be monitored. It is available with two different mounting options, so ideal for use in a range of applications and industries, eg the detection of fluid levels in water treatment containers, mechanical engineering and plant construction. The float switch also has a specially designed compression grommet which allows it to be installed from the outside. The switching function is reversible by simply rotating the float switch, making this a highly flexible and cost-effective solution.

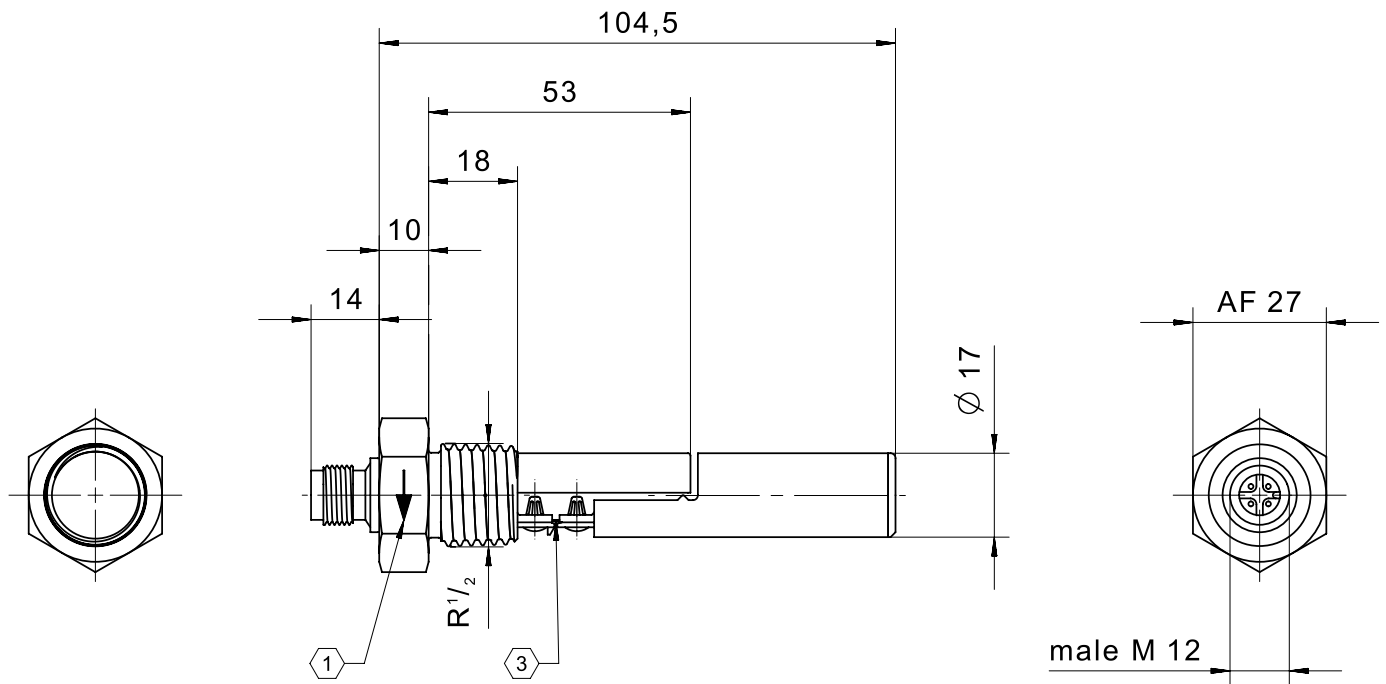
Product characteristics

- Level detection on reed-contact basis
- Teflon hinge for use in high-viscosity or contaminated media
- Material: PP or PVDF
- Mounting options: G 1/2 thread or compression grommet
- Available connection types: cable outlet, M12 connector or pigtail
- Contact form: N.O., N.C. or changeover
- Temperature range from -25 °C to +105 °C
- Switching voltage up to max. 250V
- IP67 protection class

Technical drawing

IMAGE 1/9

205KS..2..



① marking for mounting position

③ hinge made from PTFE

IMAGE 2/9

male M12

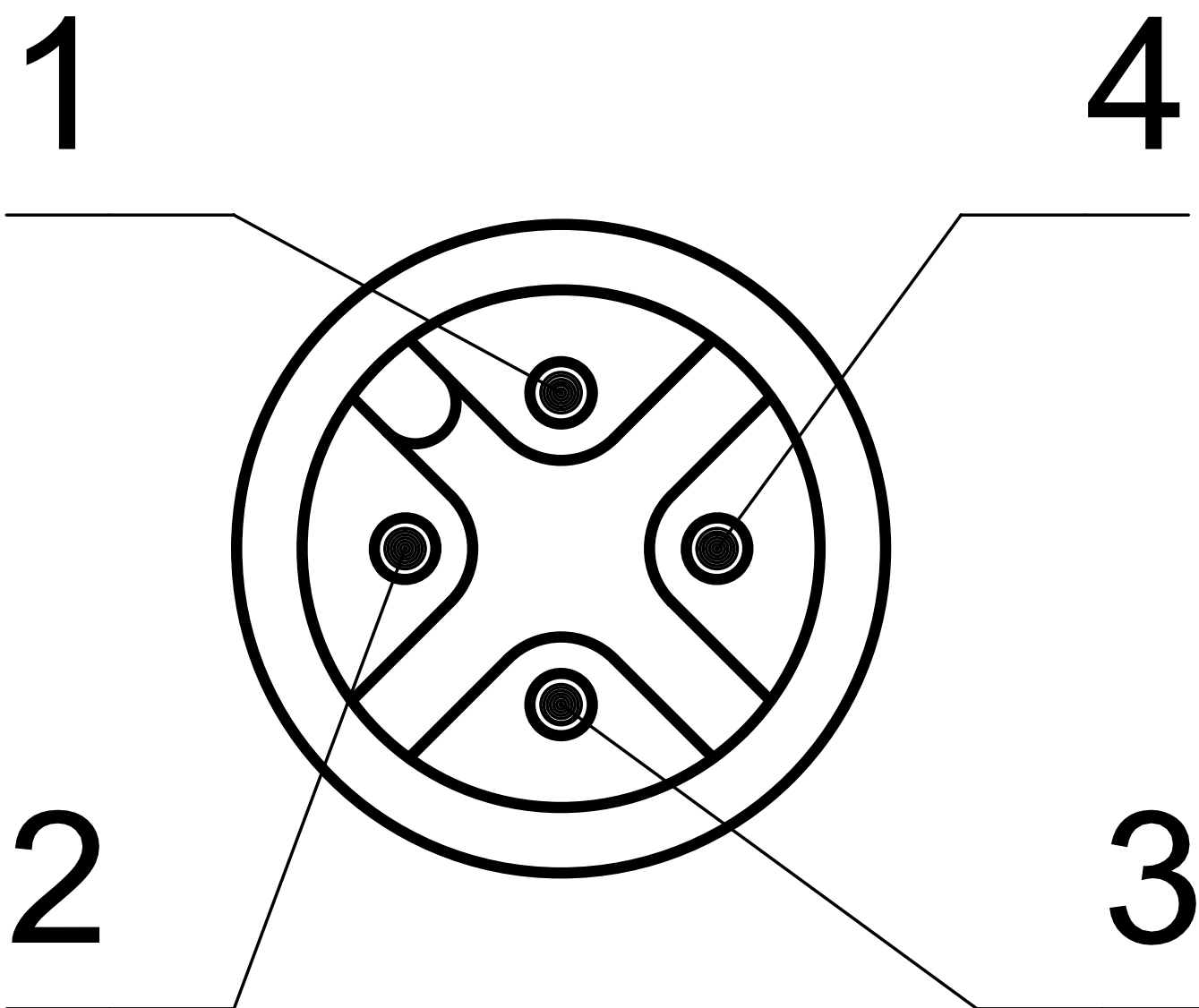
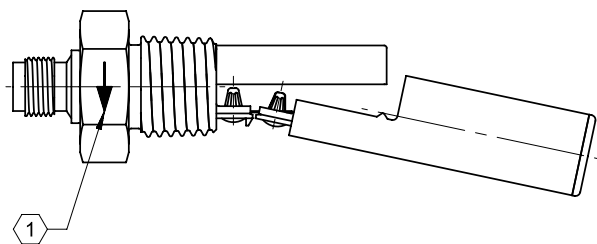
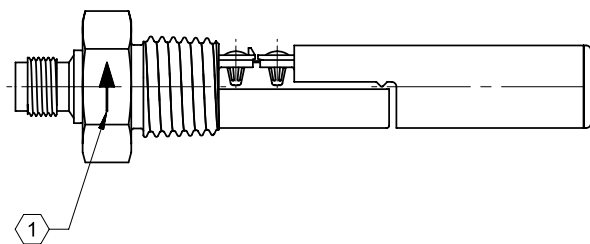
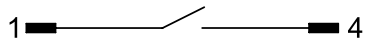


IMAGE 3/9



205KS0.2.....
205KS1.2.....



205KS0.2.....
205KS1.2.....

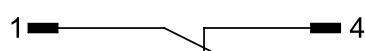
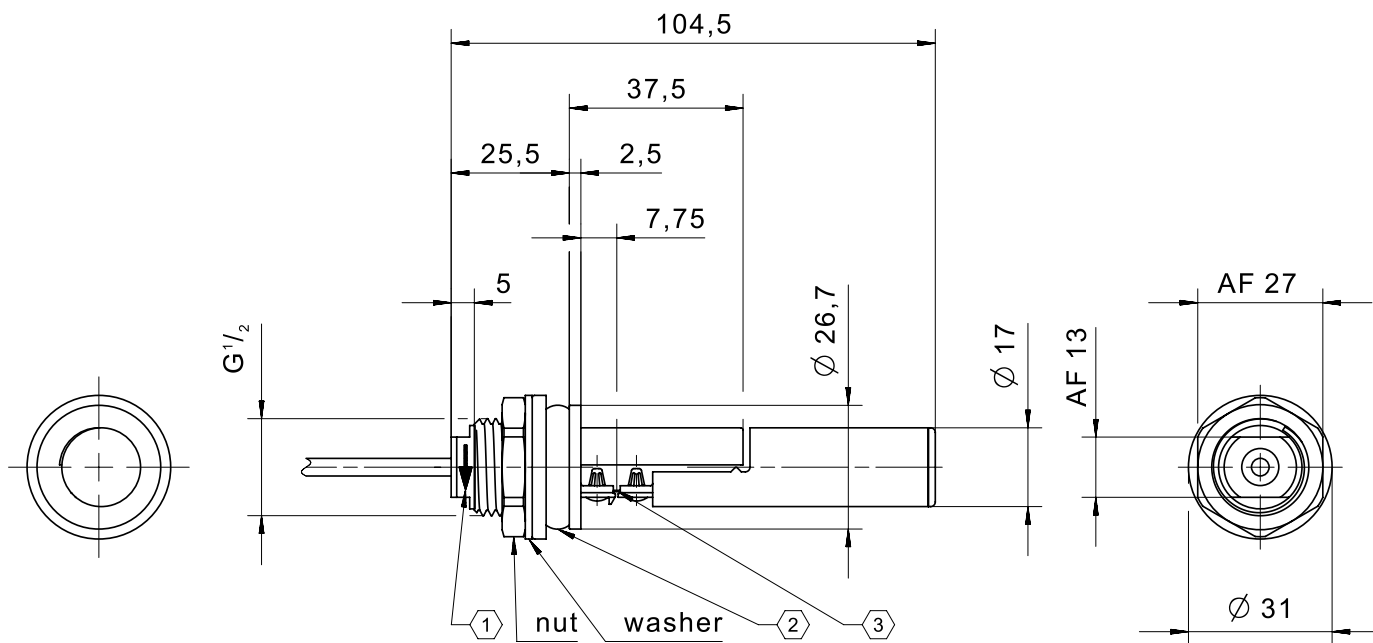


IMAGE 4/9

205KS..D..



① marking for mounting position

② compression grommet for
maximum wall thickness 3
and hole $\varnothing 27$ till $\varnothing 28$

③ hinge made from PTFE

IMAGE 5/9

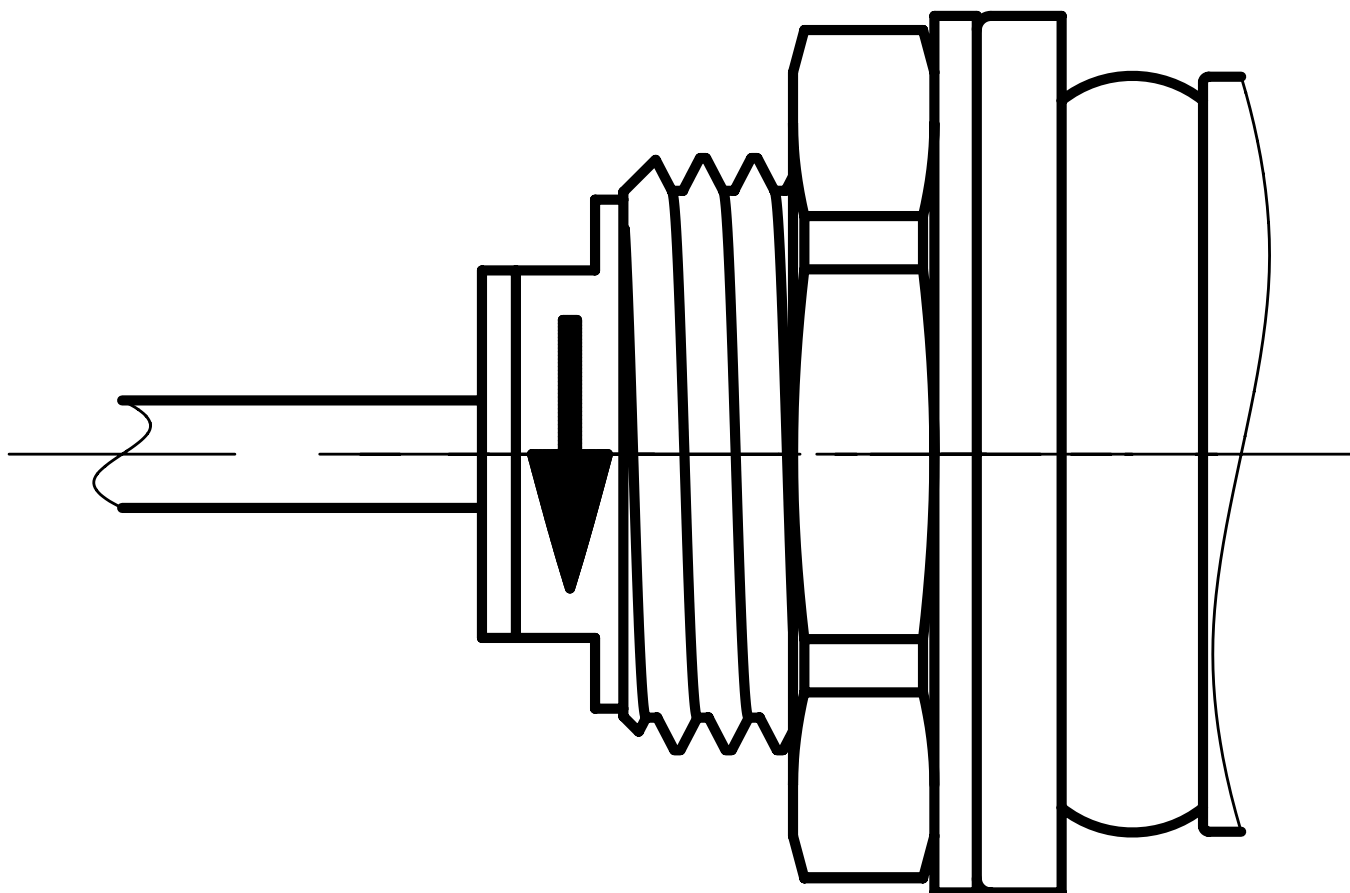


IMAGE 6/9



205KS0.D.....
205KS1.D.....

BN ———— WH

205KS2.D.....

BN ———— GN
 WH



205KS0.D.....
205KS1.D.....

BN ———— WH

205KS2.D.....

BN ———— GN
 WH

IMAGE 7/9

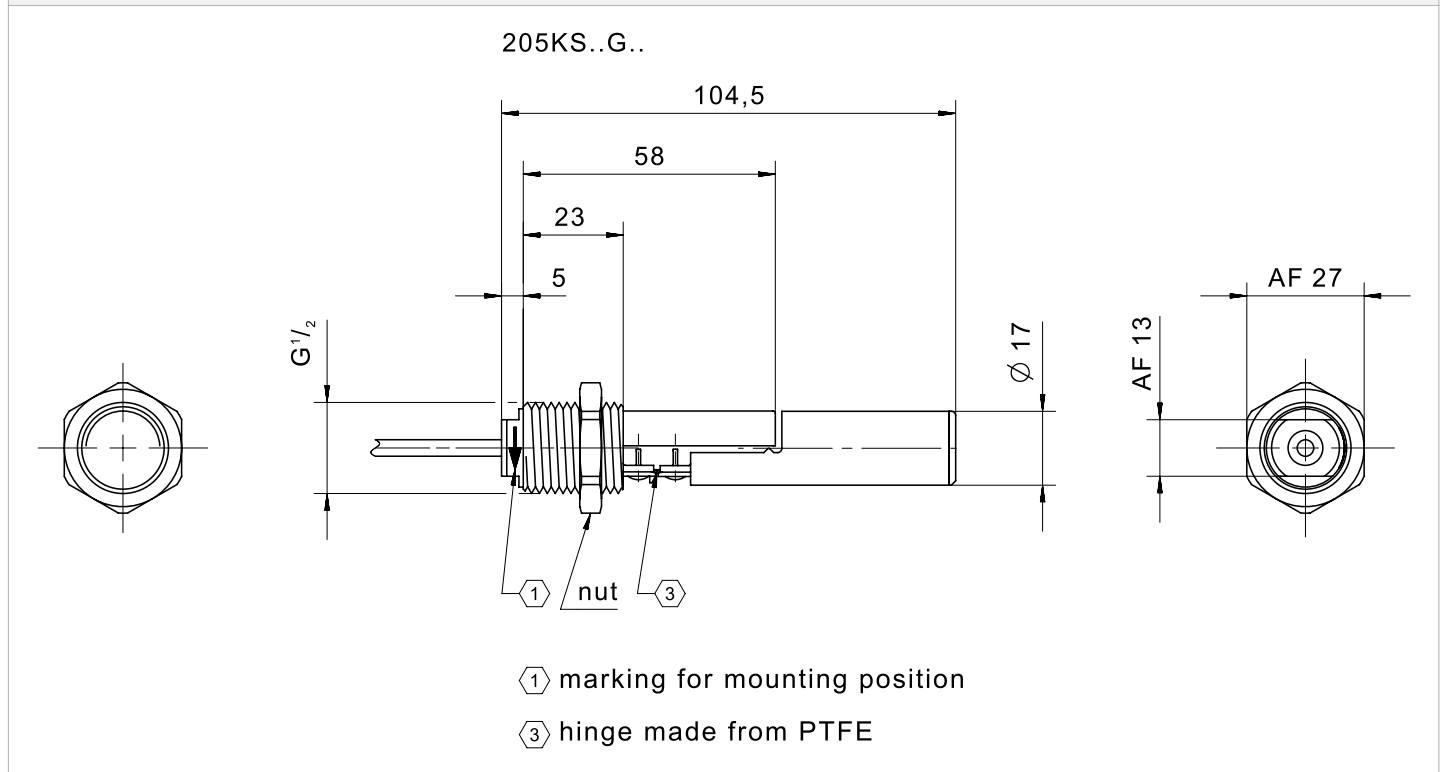


IMAGE 8/9



IMAGE 9/9

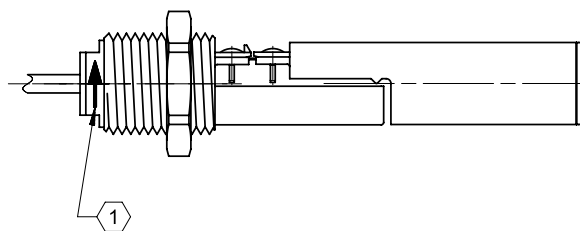


205KS0.G.....
205KS1.G.....

BN ———— WH

205KS2.G.....

BN ———— GN
 WH



205KS0.G.....
205KS1.G.....

BN ———— WH

205KS2.G.....

BN ———— GN
 WH

Product options

IMAGE 1/1

ORDERING KEY

| 205KS | | | | | Float switch side mount, Teflon hinge | |
|-------|---|---|---|-----|--|-----------------------------------|
| | | | | | Contact form | |
| | 1 | | | | N.O./N.C. max. 250V | |
| | 2 | | | | C.O. max. 48V | |
| | | | | | | |
| | | | | | Housing material | |
| | | 2 | | | PP | |
| | | 3 | | | PVDF* | * Only for connection 0 |
| | | | | | | |
| | | | | | Connections | |
| | | | 0 | | Connection thread R1/2, PVC cable connection 1 m, limit stop | |
| | | | 2 | | Connection thread R1/2, M12 connector* | * Only with material: PP |
| | | | D | | Connection thread G1/2, PVC cable connection 1m, compression grommet | |
| | | | G | | Connection thread G1/2, PVC cable connection 1 m | |
| | | | | | | |
| | | | | | Other cable lengths* | * Only for connections 0, D and G |
| | | | | -3 | Cable length 3m | |
| | | | | -5 | Cable length 5m | |
| | | | | -10 | Cable length 10m | |

Optional

More materials for housings, cable sheathing on request

Article characteristics

| Attribute | 205KS12D | 205KS12G | 205KS120 | 205KS122 | 205KS22D | 205KS22G ▶ |
|------------------------------------|-------------------|----------|----------|----------|----------|------------|
| Max. switching voltage | 250 V DC | | | | 48 V DC | |
| Max. switching voltage | 250 V AC | | | | 48 V AC | |
| Max. switching current | 1 A | | | | 0.25 A | |
| Max. switching power | 50 W | | | | 3 W | |
| Contact form | 1A or 1B | | | | 1C | |
| Output signal | digital | | | | | |
| Technology | Reed | | | | | |
| Float diameter | 17 mm | | | | | |
| Version | Teflon hinge | | | | | |
| Housing material | PP | | | | | |
| Float material | PP | | | | | |
| Cable material | PVC | | | - | PVC | |
| Operating temperature min. | -25 °C | | | | | |
| Max. operating temperature | 105 °C | | | | | |
| Pressure resistance | 3 bar | | | | | |
| Protection class outside container | IP67 DIN EN 60529 | | | | | |
| Protection class inside container | IP68 DIN EN 60529 | | | | | |
| Mounting type | Thread | | | | | |
| Thread | G 1/2 | | | | | |
| Installation opening | G1/2 | G 1/2 | G1/2 | G 1/2 | G1/2 | |
| Connector type | - | | | M12 | - | |
| Cable length | 1 m | | | - | 1 m | |

| Attribute | 205KS220 |
|------------------------------------|-------------------|
| Max. switching voltage | 48 V DC |
| Max. switching voltage | 48 V AC |
| Max. switching current | 0.25 A |
| Max. switching power | 3 W |
| Contact form | 1C |
| Output signal | digital |
| Technology | Reed |
| Float diameter | 17 mm |
| Version | Teflon hinge |
| Housing material | PP |
| Float material | PP |
| Cable material | PVC |
| Operating temperature min. | -25 °C |
| Max. operating temperature | 105 °C |
| Pressure resistance | 3 bar |
| Protection class outside container | IP67 DIN EN 60529 |
| Protection class inside container | IP68 DIN EN 60529 |
| Mounting type | Thread |
| Thread | G 1/2 |
| Installation opening | G1/2 |
| Connector type | - |
| Cable length | 1 m |