



## Float switch 205KS

The float switch side mount 205KS with Teflon hinge is ideal for use in media that has a tendency to clump or contains contaminants that need to be monitored. It is available with two different mounting options, so ideal for use in a range of applications and industries, eg the detection of fluid levels in water treatment containers, mechanical engineering and plant construction. The float switch also has a specially designed compression grommet which allows it to be installed from the outside. The switching function is reversible by simply rotating the float switch, making this a highly flexible and cost-effective solution.

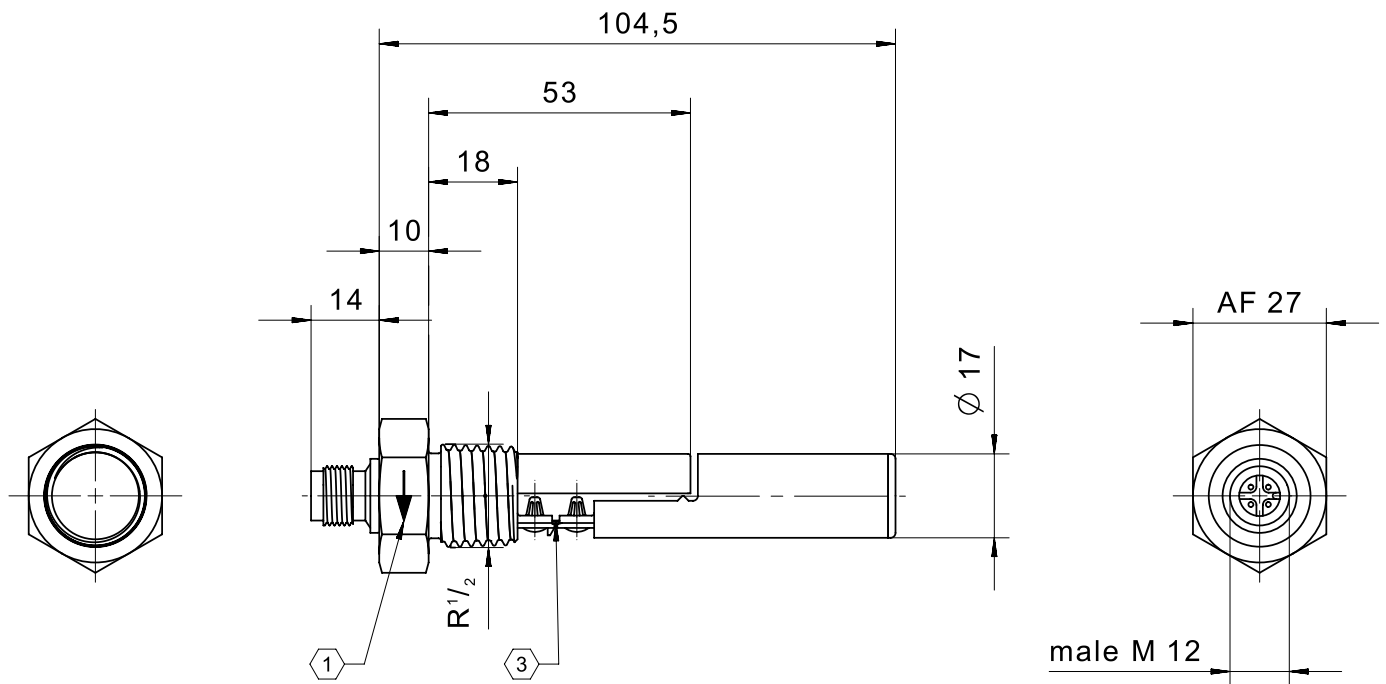
### Product characteristics

- Level detection on reed-contact basis
- Teflon hinge for use in high-viscosity or contaminated media
- Material: PP or PVDF
- Mounting options: G 1/2 thread or compression grommet
- Available connection types: cable outlet, M12 connector or pigtail
- Contact form: N.O., N.C. or changeover
- Temperature range from -25 °C to +105 °C
- Switching voltage up to max. 250V
- IP67 protection class

## Technical drawing

IMAGE 1/9

205KS..2..

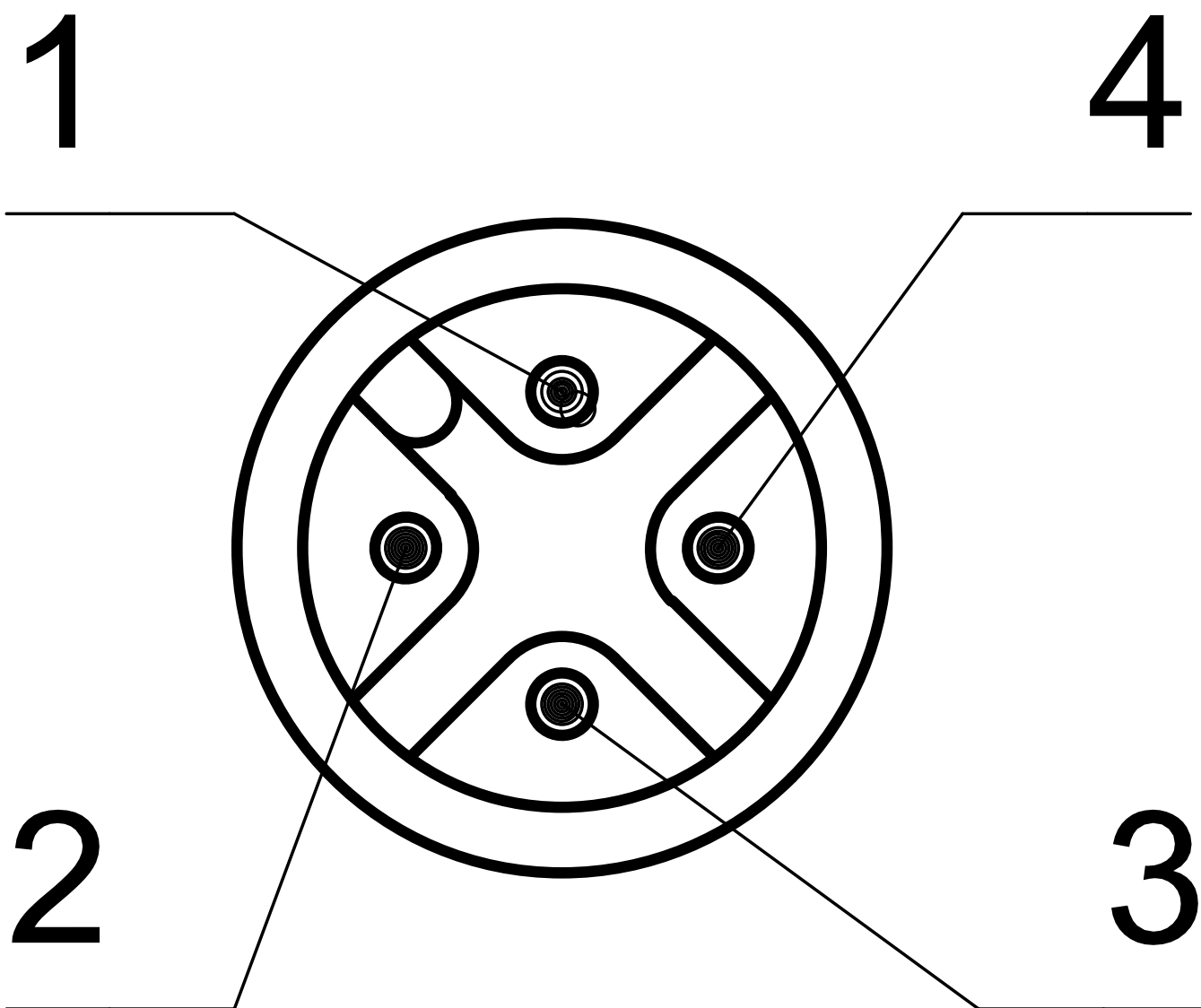


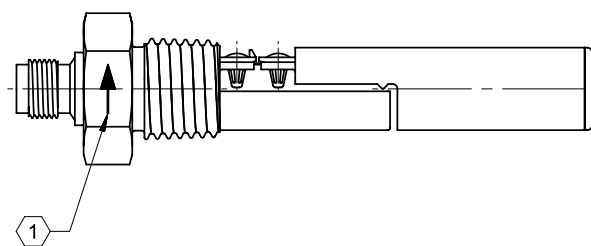
① marking for mounting position

③ hinge made from PTFE

IMAGE 2/9

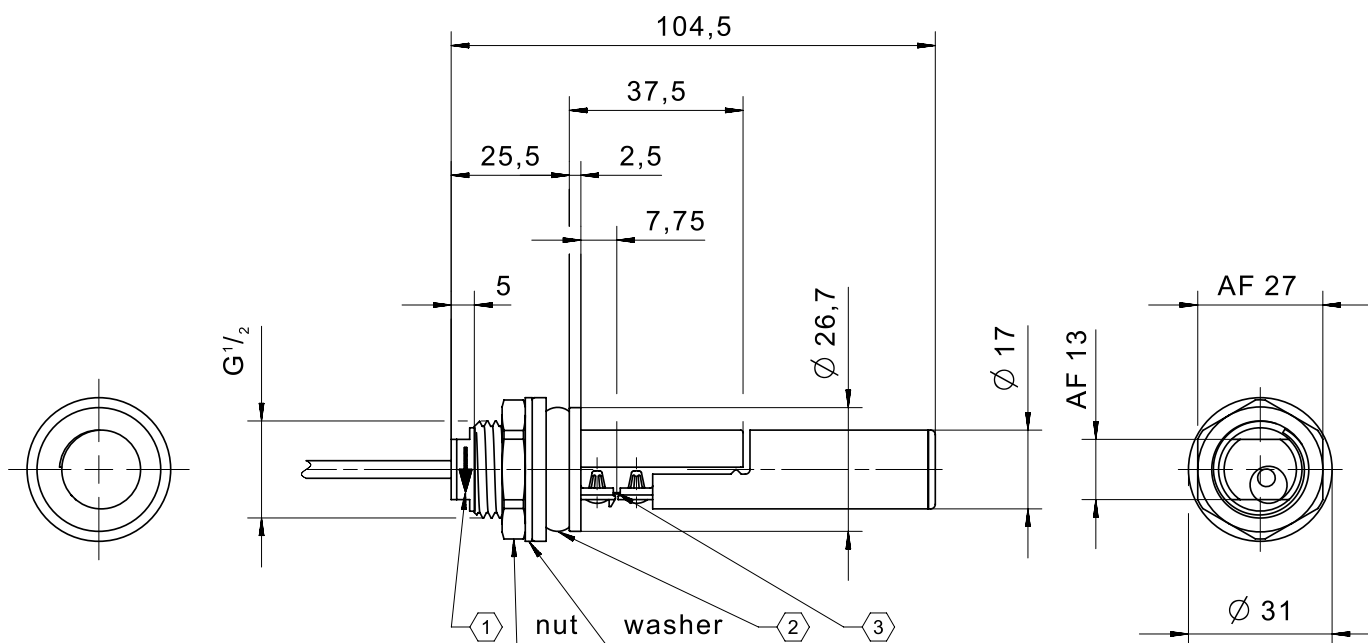
# male M12





1  4 

205KS..D..



- ① marking for mounting position
- ② compression grommet for maximum wall thickness 3 and hole  $\varnothing 27$  till  $\varnothing 28$
- ③ hinge made from PTFE

IMAGE 5/9

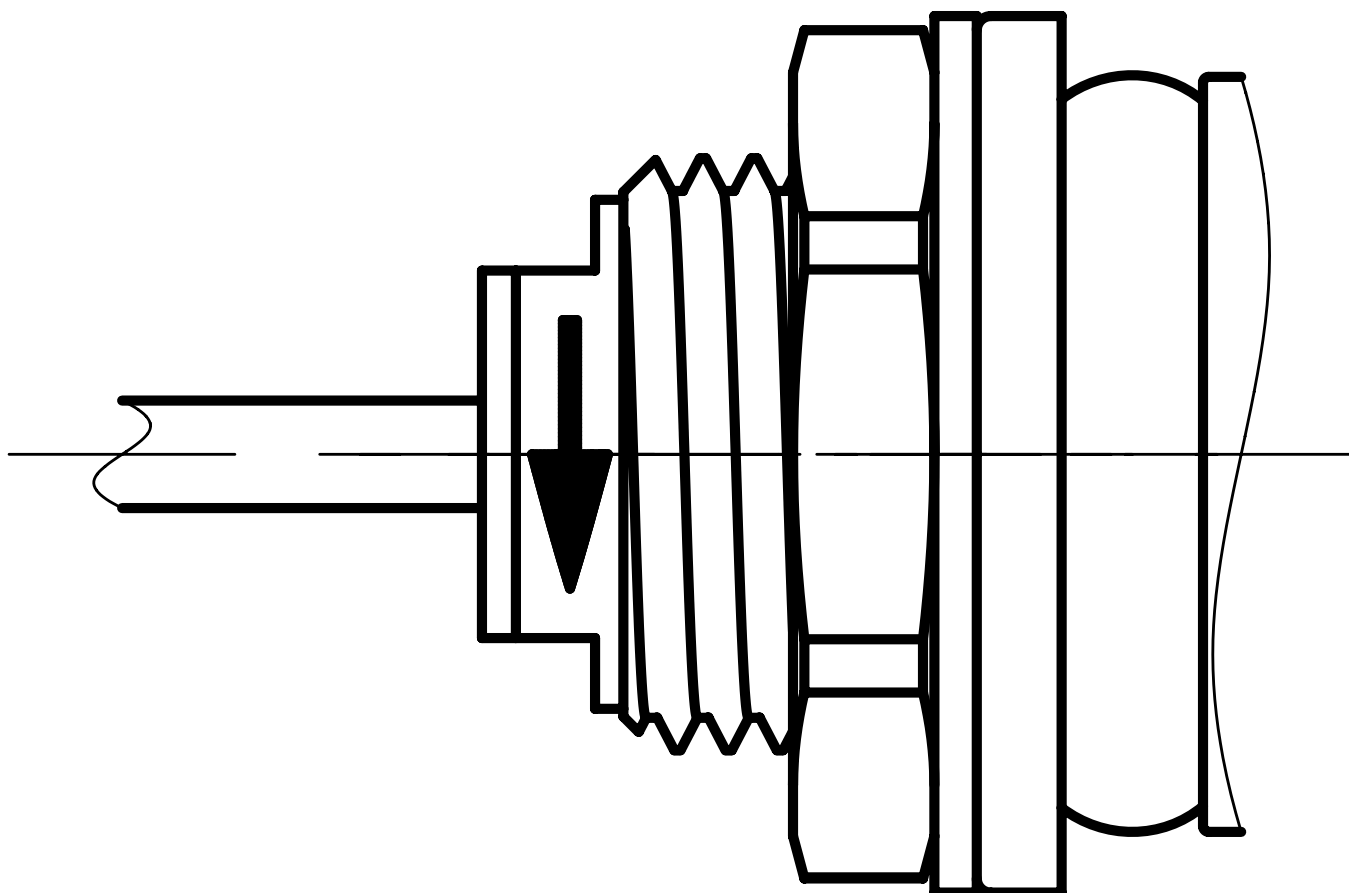


IMAGE 6/9



205KS0.D.....  
205KS1.D.....

BN ———— WH

205KS2.D.....

BN ———— GN  
                  WH



205KS0.D.....  
205KS1.D.....

BN ———— WH

205KS2.D.....

BN ———— GN  
                  WH

IMAGE 7/9

205KS..G..

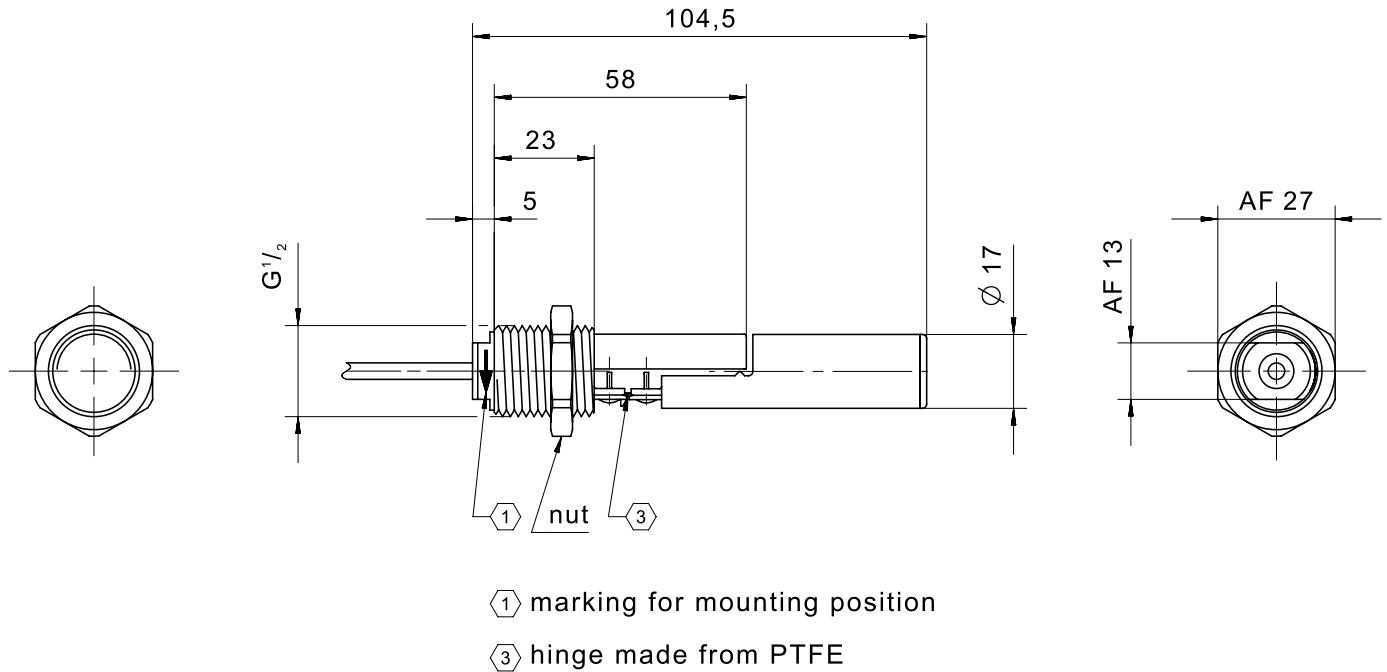


IMAGE 8/9

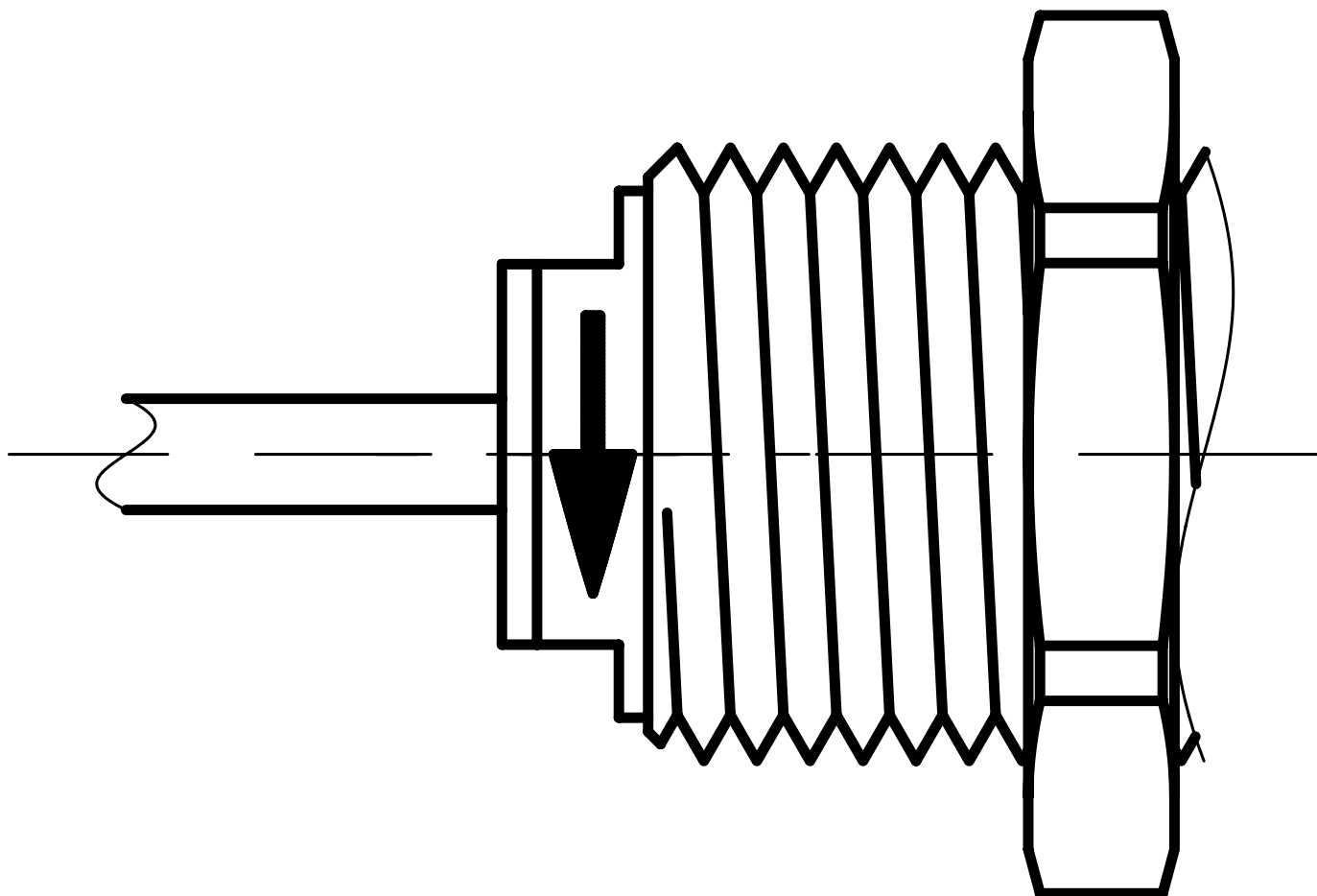


IMAGE 9/9

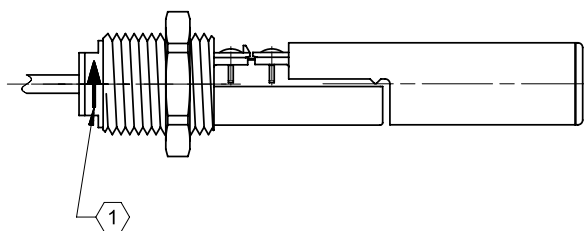


205KS0.G.....  
205KS1.G.....

BN ———— WH

205KS2.G.....

BN ———— GN  
                  WH



205KS0.G.....  
205KS1.G.....

BN ———— WH

205KS2.G.....

BN ———— GN  
                  WH

## Product options

IMAGE 1/1

### ORDERING KEY

| 205KS |   |   |     |  | Float switch side mount, Teflon hinge                                |                                   |
|-------|---|---|-----|--|--|-----------------------------------|
|       |   |   |     |  | <b>Contact form</b>  |                                   |
|       | 1 |   |     |  | N.O./N.C. max. 250V  |                                   |
|       | 2 |   |     |  | C.O. max. 48V  |                                   |
|       |   |   |     |  |  |                                   |
|       |   |   |     |  | <b>Housing material</b>  |                                   |
|       |   | 2 |     |  | PP   |                                   |
|       |   | 3 |     |  | PVDF*  | * Only for connection 0           |
|       |   |   |     |  |  |                                   |
|       |   |   |     |  | <b>Connections</b>   |                                   |
|       |   |   | 0   |  | Connection thread R1/2, PVC cable connection 1 m, limit stop         |                                   |
|       |   |   | 2   |  | Connection thread R1/2, M12 connector*                               | * Only with material: PP          |
|       |   |   | D   |  | Connection thread G1/2, PVC cable connection 1m, compression grommet |                                   |
|       |   |   | G   |  | Connection thread G1/2, PVC cable connection 1 m                     |                                   |
|       |   |   |     |  |  |                                   |
|       |   |   |     |  | <b>Other cable lengths*</b>  | * Only for connections 0, D and G |
|       |   |   | -3  |  | Cable length 3m  |                                   |
|       |   |   | -5  |  | Cable length 5m  |                                   |
|       |   |   | -10 |  | Cable length 10m   |                                   |

#### Optional

More materials for housings, cable sheathing on request



## Article characteristics

| Attribute                          | 205KS12D          | 205KS12G | 205KS120 | 205KS122 | 205KS22D | 205KS22G ▶ |
|------------------------------------|-------------------|----------|----------|----------|----------|------------|
| Max. switching voltage             | 250 V DC          |          |          |          | 48 V DC  |            |
| Max. switching voltage             | 250 V AC          |          |          |          | 48 V AC  |            |
| Max. switching current             | 1 A               |          |          |          | 0.25 A   |            |
| Max. switching power               | 50 W              |          |          |          | 3 W      |            |
| Contact form                       | 1A or 1B          |          |          |          | 1C       |            |
| Output signal                      | digital           |          |          |          |          |            |
| Technology                         | Reed              |          |          |          |          |            |
| Float diameter                     | 17 mm             |          |          |          |          |            |
| Version                            | Teflon hinge      |          |          |          |          |            |
| Housing material                   | PP                |          |          |          |          |            |
| Float material                     | PP                |          |          |          |          |            |
| Cable material                     | PVC               |          |          | -        | PVC      |            |
| Operating temperature min.         | -25 °C            |          |          |          |          |            |
| Max. operating temperature         | 105 °C            |          |          |          |          |            |
| Pressure resistance                | 3 bar             |          |          |          |          |            |
| Protection class outside container | IP67 DIN EN 60529 |          |          |          |          |            |
| Protection class inside container  | IP68 DIN EN 60529 |          |          |          |          |            |
| Mounting type                      | Thread            |          |          |          |          |            |
| Thread                             | G 1/2             |          |          |          |          |            |
| Installation opening               | G1/2              | G 1/2    | G1/2     | G 1/2    | G1/2     |            |
| Connector type                     | -                 |          |          | M12      | -        |            |
| Cable length                       | 1 m               |          |          | -        | 1 m      |            |

#### Article characteristics

| Attribute                          | 205KS220          |
|------------------------------------|-------------------|
| Max. switching voltage             | 48 V DC           |
| Max. switching voltage             | 48 V AC           |
| Max. switching current             | 0.25 A            |
| Max. switching power               | 3 W               |
| Contact form                       | 1C                |
| Output signal                      | digital           |
| Technology                         | Reed              |
| Float diameter                     | 17 mm             |
| Version                            | Teflon hinge      |
| Housing material                   | PP                |
| Float material                     | PP                |
| Cable material                     | PVC               |
| Operating temperature min.         | -25 °C            |
| Max. operating temperature         | 105 °C            |
| Pressure resistance                | 3 bar             |
| Protection class outside container | IP67 DIN EN 60529 |
| Protection class inside container  | IP68 DIN EN 60529 |
| Mounting type                      | Thread            |
| Thread                             | G 1/2             |
| Installation opening               | G1/2              |
| Connector type                     | -                 |
| Cable length                       | 1 m               |