



Actuator 304275.2

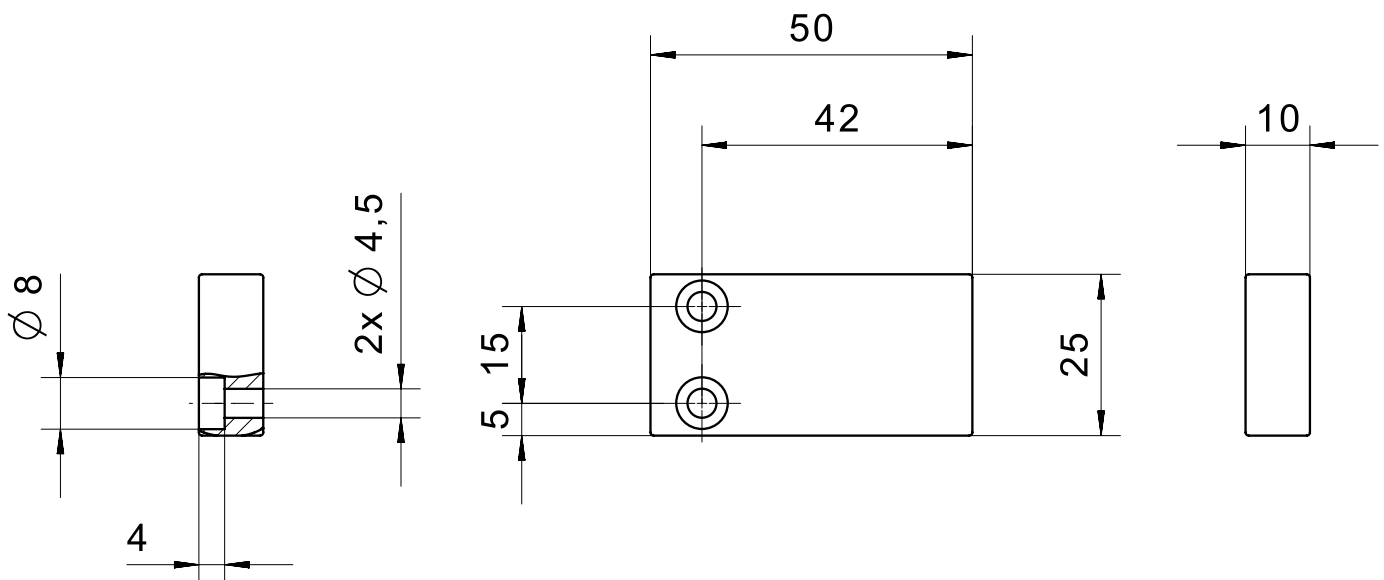
The 304275.2 actuator is for use with the 114 safety sensors. The actuator can be fastened in guard door profiles thanks to the flat housing.

Product characteristics

- Compact, space-saving design

Technical drawing

IMAGE 1/1



Product options

IMAGE 1/1

ORDERING KEY

304 275 .2			
	0		Bottom actuation
	3		Front actuation

Article characteristics

Attribute	30427502	30427532
Coding acc. to EN ISO 14119	Low	
Suitable for sensor type(s)	114	
Dimensions	50x25x10	
Housing material	PBT	
Housing colour	schwarz	
Mounting type	screwed	