



Actuator 304275.2

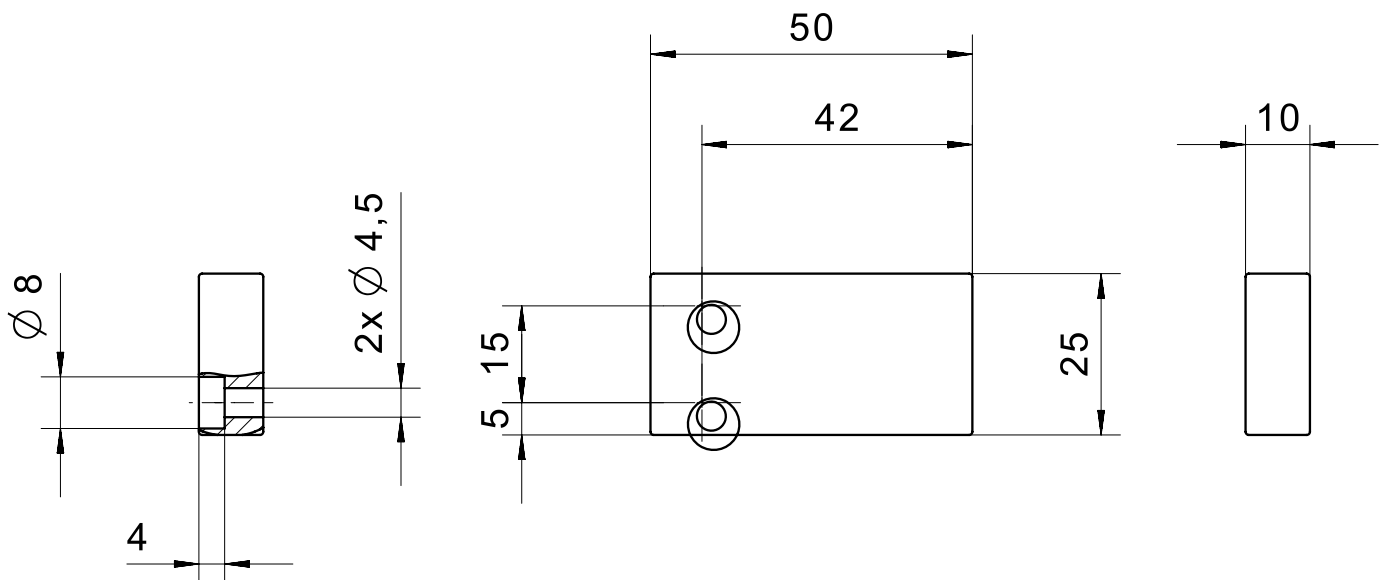
The 304275.2 actuator is for use with the 114 safety sensors. The actuator can be fastened in guard door profiles thanks to the flat housing.

Product characteristics

- Compact, space-saving design

Technical drawing

IMAGE 1/1



Product options

IMAGE 1/1

ORDERING KEY

| | | | |
|------------|---|--|------------------|
| 304 275 .2 | | | |
| | 0 | | Bottom actuation |
| | 3 | | Front actuation |

Article characteristics

| Attribute | 30427502 | 30427532 |
|-----------------------------|----------|----------|
| Coding acc. to EN ISO 14119 | Low | |
| Suitable for sensor type(s) | 114 | |
| Dimensions | 50x25x10 | |
| Housing material | PBT | |
| Housing colour | schwarz | |
| Mounting type | screwed | |