



## Actuator 165MBK

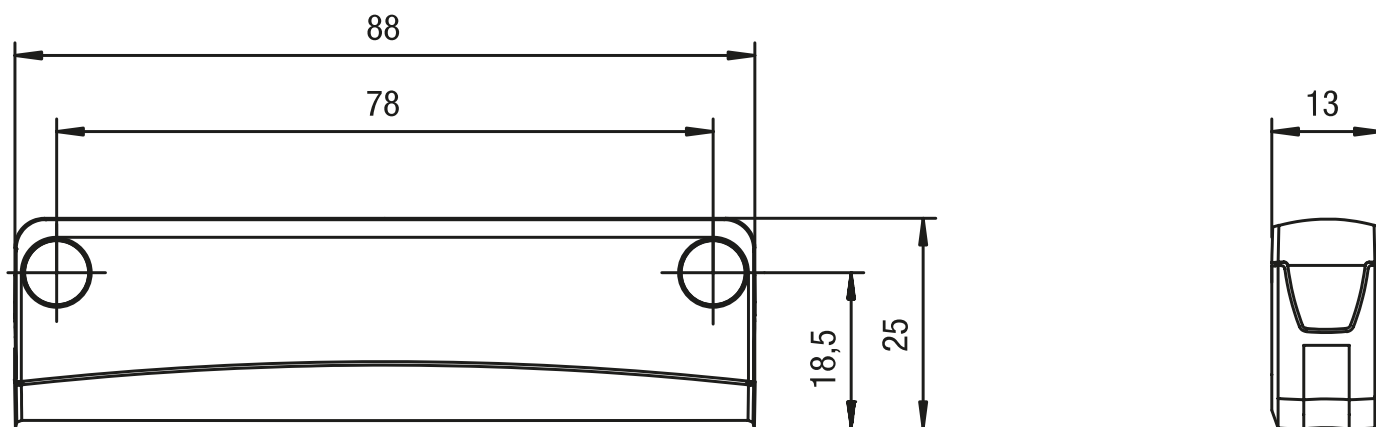
When used with the corresponding safety sensor, the magnetic actuator of the new eloProtect M range enables optimised operating distances and offset values as well as increased tampering protection.

### Technical specifications

- Flexibility in installation and use from variable actuation direction
- Space saving and simple installation through small size
- Screw covers prevent easy removal and the accumulation of dirt
- Strong resistance against cleaning agents (ECOLAB) makes this suitable for use in the food and packaging industries.

### Technical drawing

IMAGE 1/1



## Product options

IMAGE 1/1

### MATCHING ACTUATORS

Actuators	Actuation direction	165MSK00.1A 165MSK00.1G			165MSK00.1E 165MSK00.1K			165MSK00.1B 165MSK00.1H		
		S <sub>0 min</sub>	S <sub>ao</sub>	S <sub>ar</sub>	S <sub>0 min</sub>	S <sub>ao</sub>	S <sub>ar</sub>	S <sub>0 min</sub>	S <sub>ao</sub>	S <sub>ar</sub>
<b>165 MBK 001</b>	Front	0.5	5	14	-	-	-	0.5	5	14
<b>165 MBK 101</b>		0.5	8	18	-	-	-	0.5	8	18
<b>165 MBK 201</b>		0.5	5	14	-	-	-	0.5	5	14
<b>165 MBK 301</b>	Front 90°	0.5	8	18	-	-	-	0.5	8	18
<b>165 MBK 001</b>		-	-	-	0.5	5	14	-	-	-
<b>165 MBK 101</b>	Side	-	-	-	-	8	18	-	-	-
<b>165 MBK 201</b>		-	-	-	0.5	5	14	-	-	-
<b>165 MBK 301</b>	Side 90°	-	-	-	-	8	18	-	-	-
		-	-	-	-	-	-	-	-	-

Actuators	Actuation direction	165MSK00.1F 165MSK00.1L			165MSK00.1C 165MSK00.1I			165MSK00.1D 165MSK00.1J		
		S <sub>0 min</sub>	S <sub>ao</sub>	S <sub>ar</sub>	S <sub>0 min</sub>	S <sub>ao</sub>	S <sub>ar</sub>	S <sub>0 min</sub>	S <sub>ao</sub>	S <sub>ar</sub>
<b>165 MBK 001</b>	Front	-	-	-	0.5	5	14	0.5	5	14
<b>165 MBK 101</b>		-	-	-	0.5	8	18	0.5	8	18
<b>165 MBK 201</b>		-	-	-	0.5	5	14	0.5	5	14
<b>165 MBK 301</b>	Front 90°	-	-	-	0.5	8	18	0.5	8	18
<b>165 MBK 001</b>		0.5	5	14	-	-	-	-	-	-
<b>165 MBK 101</b>	Side	-	8	18	-	-	-	-	-	-
<b>165 MBK 201</b>		0.5	5	14	-	-	-	-	-	-
<b>165 MBK 301</b>	Side 90°	-	8	18	-	-	-	-	-	-
		-	-	-	-	-	-	-	-	-

S<sub>0 min</sub> = minimum switching distance (mm), S<sub>ao</sub> = operating distance (mm), S<sub>ar</sub> = assured switch-off distance (mm)

#### Article characteristics

Attribute	165MBK101	165MBK201	165MBK301
Coding acc. to EN ISO 14119	Low		
Suitable for sensor type(s)	165MSK		
Dimensions	88x25x13		
Housing material	PBT/PC		
Housing colour	grau/schwarz		
Mounting type	screwed		
Torque for fastening screws	0.7 N m		