



eloLance SL2R

The eloLance – the new suction lance generation

The eloLance is the new generation of suction lances that gives you everything you need to make your systems and machines more efficient and reduce your workload.

The low extraction point enables economical, sustainable handling of liquids and reduces residual quantities in canisters and other containers. The high reliability and durability in different fluids, combined with simple, safe operation, are strong arguments for users. A quasi-analogue signal forms the basis for innovative IoT functions. These provide valuable application benefits such as detailed consumption analysis, predictive planning, automatic reordering, plausibility checks and container size detection.

Product characteristics

- Seal-free design
- Low extraction point
- Easy handling due to ergonomical head
- Continuous level monitoring – Reed grid with 20 mm graduation
- High resistance due to optimised wall thickness for components in contact with media
- Clamping cone for variable height adjustment
- Horizontal hose and cable outlet
- Ball leakage brake

Technical drawing

IMAGE 1/4

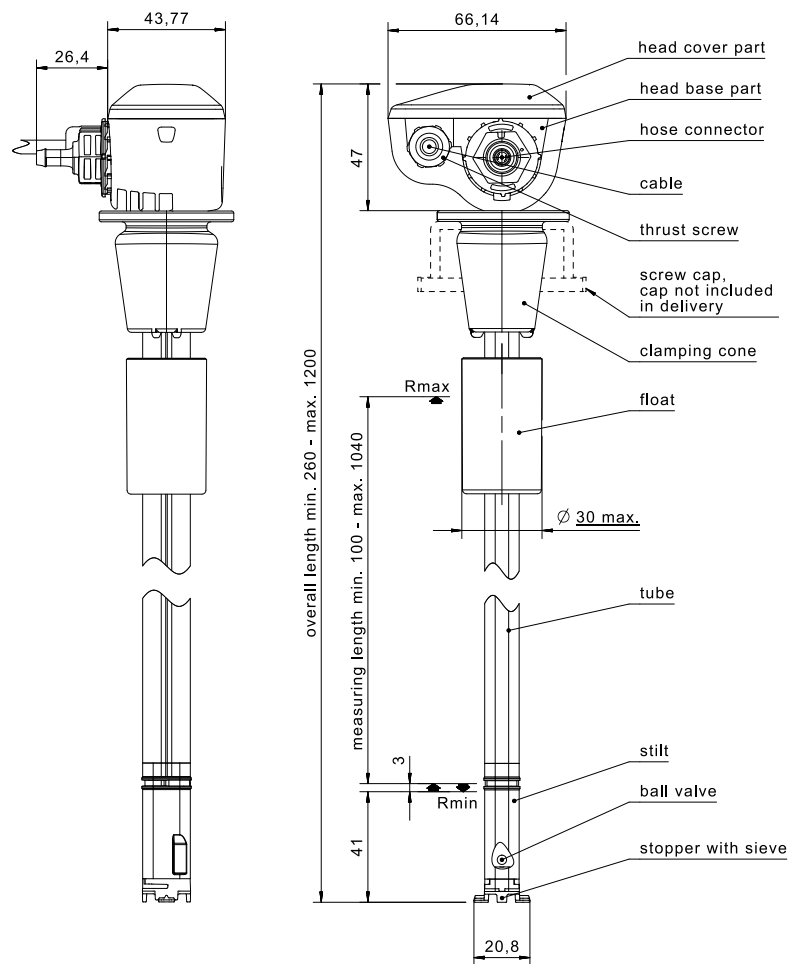
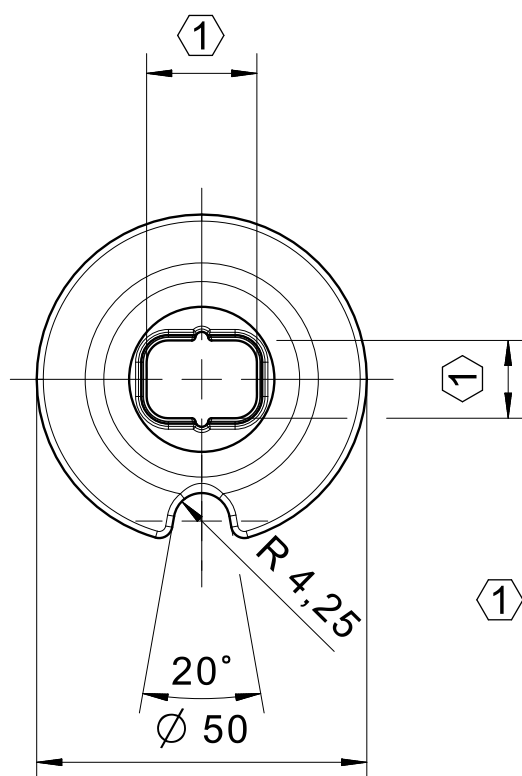
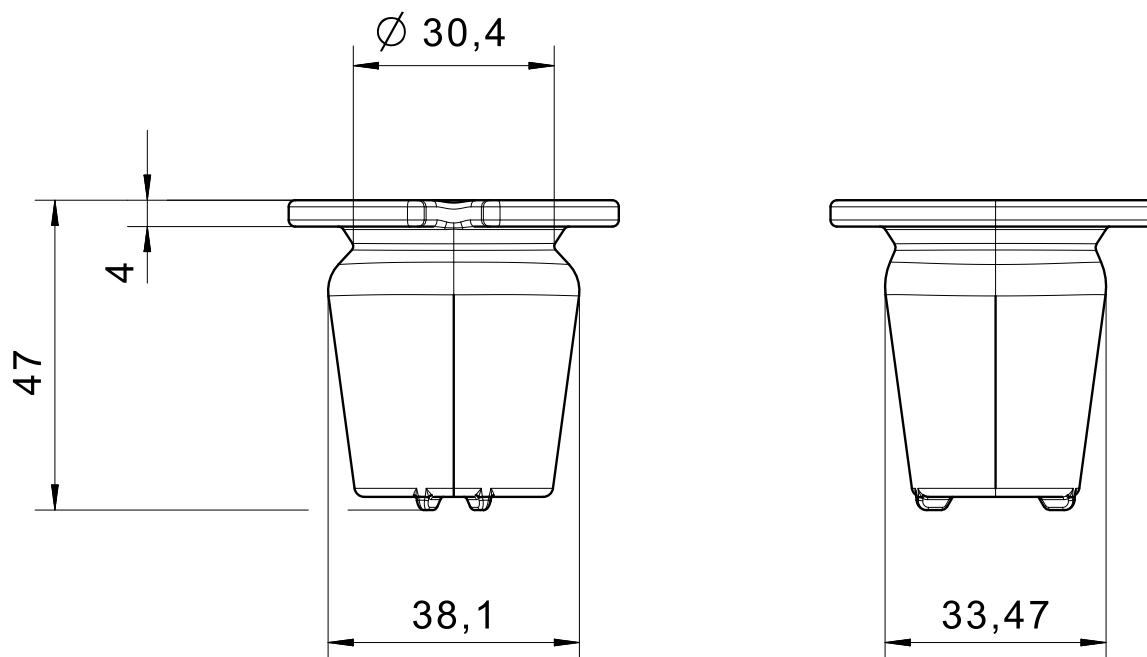


IMAGE 2/4



IMAGE 3/4



① compatible with SL2...

IMAGE 4/4



| D1 | D2 | D3 |
|----|-----|----|
| Ø4 | 4,5 | 2 |
| Ø6 | 6,6 | 4 |
| Ø8 | 8,7 | 6 |

Article characteristics

| Attribute | SL2R3000005 | SL2R2000003 | SL2R2000005 | SL2R2000008 | SL2R2000018 | SL2R3000003 |
|---|--------------------------------------|---------------------------|--------------------------|-------------|-------------|-------------|
| Max. switching voltage | 48 V AC | | | | | |
| Max. switching voltage | 48 V DC | | | | | |
| Max. switching current | 0.003 A | | | | | |
| Max. switching power | 10 VA | | | | | |
| Output signal | digital | | | | | |
| Technology | Reed | | | | | |
| Max. resistance value | 13800 Ohm | 5170 Ohm | 7520 Ohm | 11280 Ohm | 25380 Ohm | 9020 Ohm |
| Min. resistance value | 820 Ohm | 470 Ohm | | | | 820 Ohm |
| Input voltage | 48 V | | | | | |
| Value single resistor | 820 Ohm | 470 Ohm | | | | 820 Ohm |
| Spacing | 20 mm | | | | | |
| Switching points | 15 ° | 11 ° | 16 ° | 24 ° | 54 ° | 11 ° |
| Switching point height Rmin | 41 mm | | | | | |
| Run-out brake | Gravity ball brake | | | | | |
| Filter sieve | Filter mesh size 50 x 0,89mm² | | | | | |
| Article marking | Laser marking | | | | | |
| Structure | Seal free structure in immersed area | | | | | |
| Overall length | 440 mm | 340 mm | 440 mm | 600 mm | 1200 mm | 340 mm |
| Immersion length max. | 389 mm | 289 mm | 389 mm | 549 mm | 1149 mm | 289 mm |
| Height/Width/Depth head piece | 47mm x 66,14mm x 43,77mm | 47mm x 66,14mm x 43,77mmx | 47mm x 66,14mm x 43,77mm | | | |
| Float diameter | 30 mm | | | | | |
| Recommended minimum density of the medium | 0.75 g/cm³ | | | | | |
| Housing material | PP/PVC/TPE | | | | | |
| Float material | PE | | | | | |
| Hose fitting material | PE | | | | | |
| Riser material | PVC | | | | | |
| Sealing ring material | - | | | | | |
| Cable material | PVC | | | | | |
| Hose material | - | | | | | |
| Valve ball material | Glass | | | | | |
| Container fastening material | Silicone | | | | | |
| Protection class head piece | IP65 DIN EN 60529 | | | | | |

| Attribute | SL2R3000005 | SL2R2000003 | SL2R2000005 | SL2R2000008 | SL2R2000018 | SL2R3000003 |
|-----------------------------------|--|-------------------------|-------------|-------------|-------------|----------------------------|
| Protection class below head piece | IPX8 DIN EN 60529 | | | | | |
| Operating temperature min. | 5 °C | | | | | |
| Max. operating temperature | 60 °C | | | | | |
| Min. storage temperature | -20 °C | | | | | |
| Max. storage temperature | 60 °C | | | | | |
| Connection/outlets | Hose fitting for hose with inner diameter 6 mm | | | | | |
| Installation opening | min. 30mm | | | | | |
| Mounting type | Clamping cone | | | | | |
| Connector type | - | | | | | |
| Cable length | 3 m | | | | | |
| Connection type | End splice | | | | | |
| Cable type | 3x0,50mm² PVC LiYYöw/UL | 2x0,50mm² PVC LiYYöw/UL | | | | 3x0,50mm² PVC LiYYöw/UL |