



## Override key lock

### Product characteristics

- Material: stainless steel 1.4301

### Technical drawing

IMAGE 1/2: ZLO SCHLOSS VERSCHIEDENSCHLIESSEND / INDIVIDUALSCHLÜSSEL, AUF 0° UND 180° ABZIEHBAR

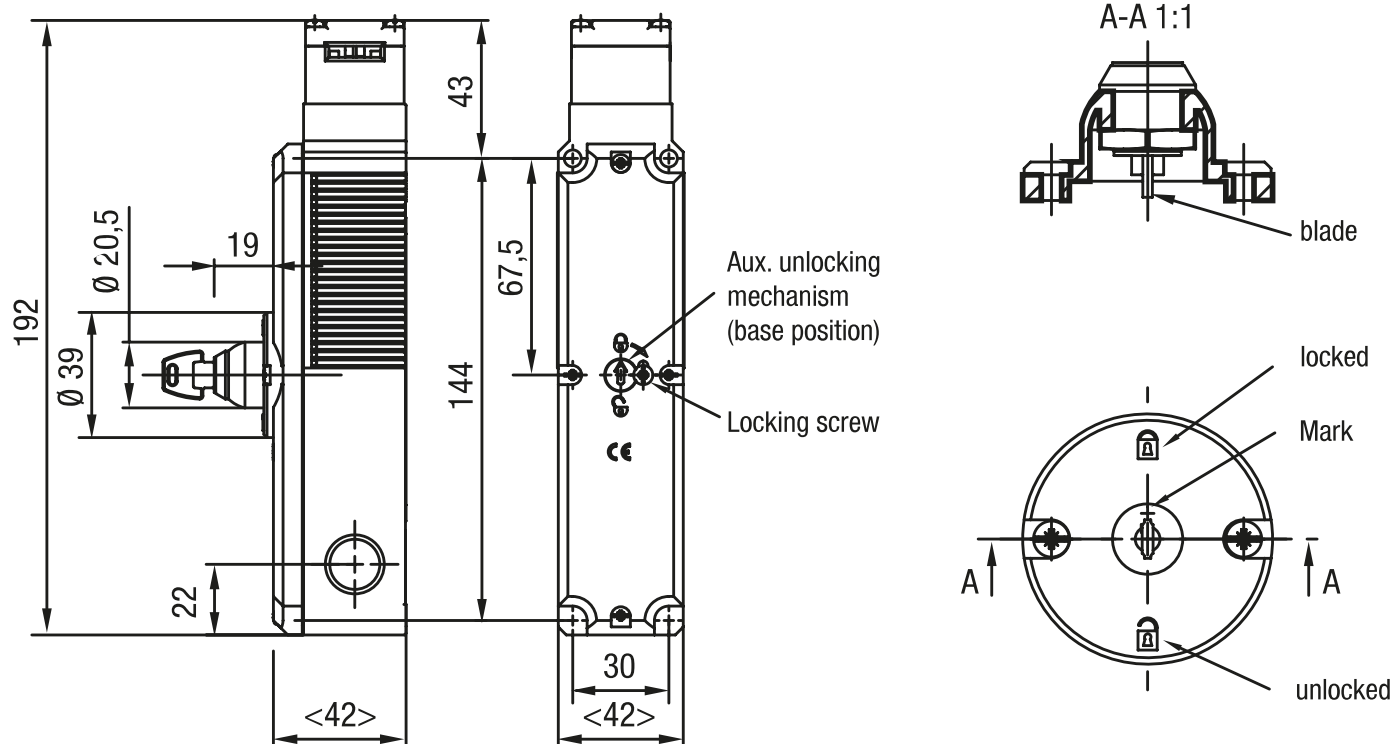
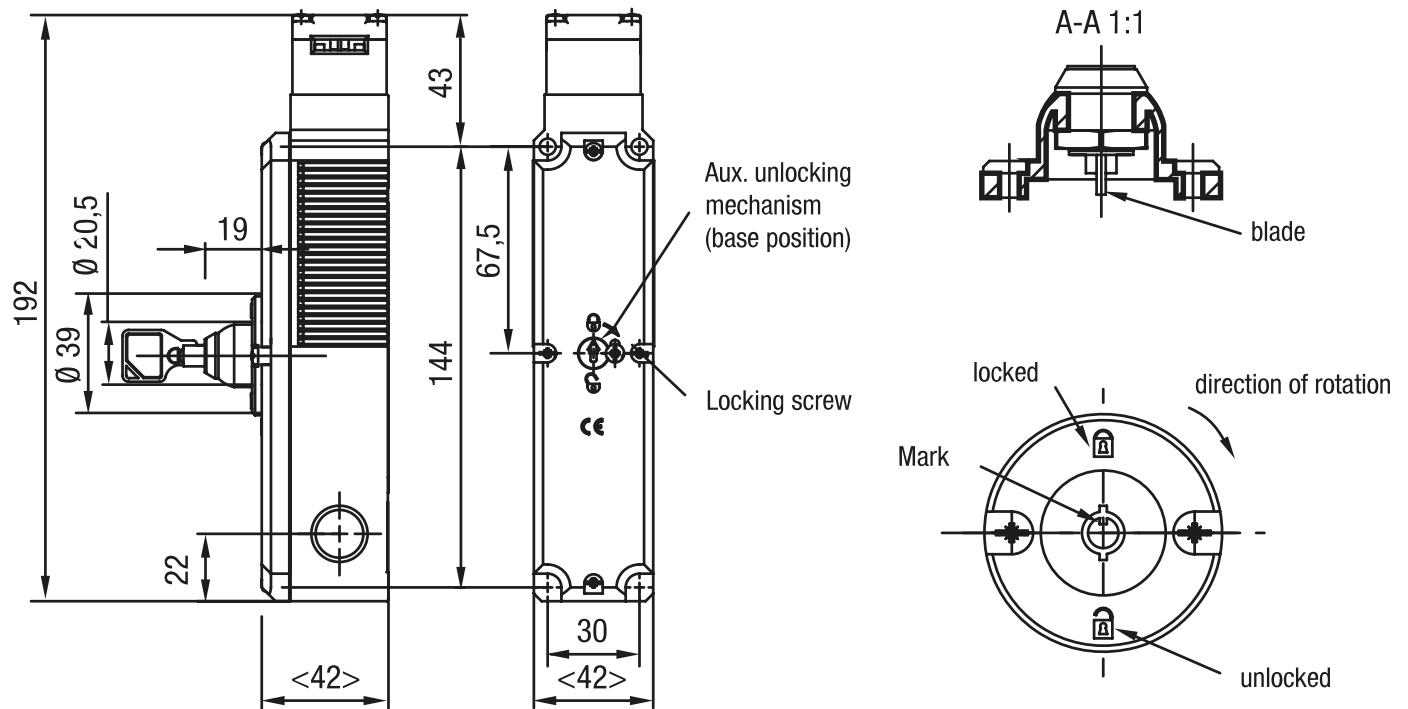
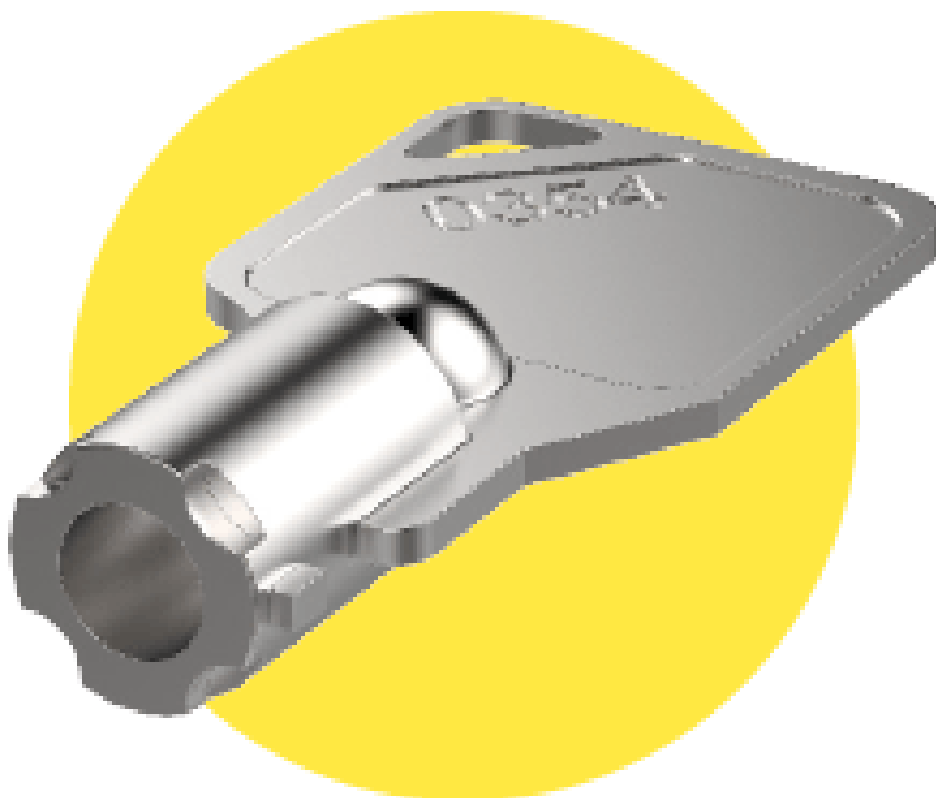


IMAGE 2/2: ZL1 SCHLOSS GLEICHSCHLIESSEND / GENERALSCHLÜSSEL, AUF 0° UND 180° ABZIEHBAR



## Product options

IMAGE 1/2



# ZL2 replacement key for lock, simultaneous locking (2 pcs.)

IMAGE 2/2

## ORDERING KEY

ZL		Pivot for supporting release
	0	Lock, individual locking / individual key, removable at 0° and 180°
	1	Lock, simultaneous locking / universal key, removable at 0° and 180°
	2	Replacement key for lock, simultaneous locking (2 pcs.)

## Article characteristics

Attribute	ZL0	ZL1	ZL2	EDZL0	EDZL1	EDZL2
Dimensions	D 39 x 19 mm		-			
Tightening position	2		-			
Locking mode	individual locking	simultaneous locking		-		
Key type	Individual key	Universal key	Replacement key	-		
Housing material	Kunststoff		Stahl rostfrei	-		
Mounting type	screwed		-			