



## Sicherung der Befestigungsschrauben 35104

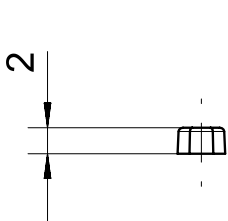
### Produktmerkmale

- verhindert einfache Demontage von Sicherheitssensoren und Betätigern

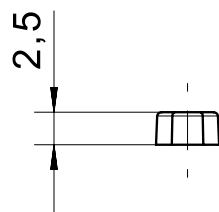
### Technische Zeichnung

BILD 1/1

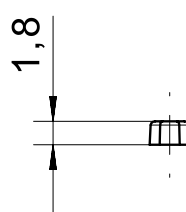
351040



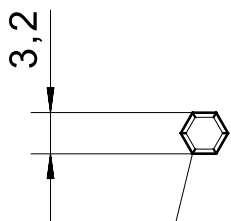
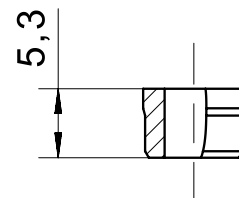
351041



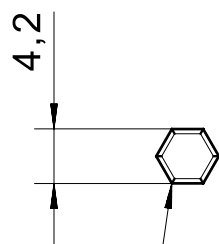
351042



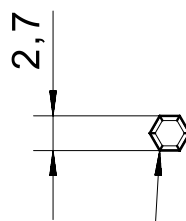
351045



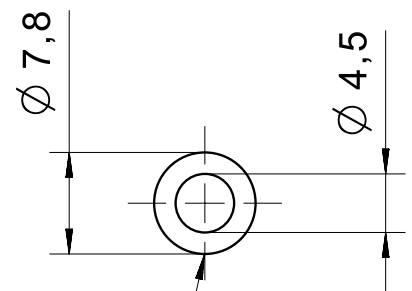
Pa6



Pa6



Pa6



PBT

## Produktoptionen

BILD 1/1

### ORDERING KEY

| 351 |     | Anti-tamper mounting screws |
|-----|-----|-----------------------------|
|     | 040 | Cylinder screws M4          |
|     | 041 | Cylinder screws M5          |
|     | 042 | Countersunk screws M4       |
|     | 045 | Mounting sleeve             |