



## Sicherung der Befestigungsschrauben 35104

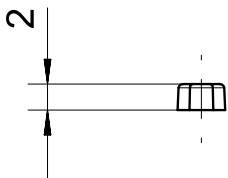
### Produktmerkmale

- verhindert einfache Demontage von Sicherheitssensoren und Betätigern

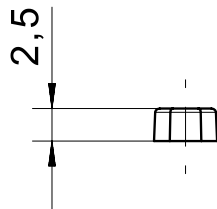
### Technische Zeichnung

BILD 1/1

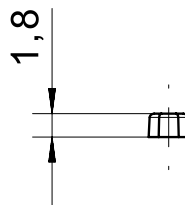
351040



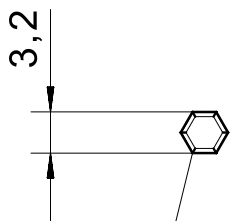
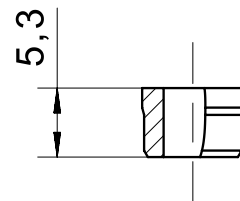
351041



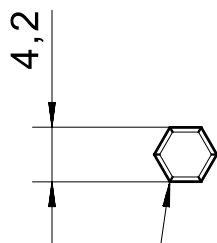
351042



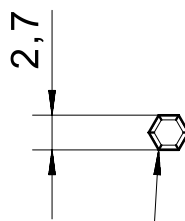
351045



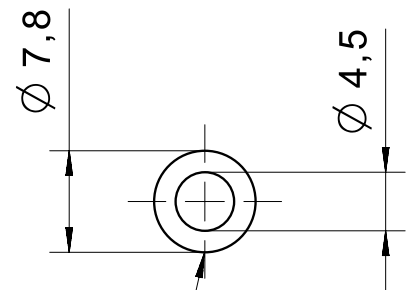
Pa6



Pa6



Pa6



PBT

## Produktoptionen

BILD 1/1

### ORDERING KEY

351		Anti-tamper mounting screws
	040	Cylinder screws M4
	041	Cylinder screws M5
	042	Countersunk screws M4
	045	Mounting sleeve